



[Go to Product page](#)

Datasheet for ABIN1318340

RNF212 Protein (AA 1-297) (GST tag)

1 Image

Overview

Quantity:	10 µg
Target:	RNF212
Protein Characteristics:	AA 1-297
Origin:	Human
Source:	Wheat germ
Protein Type:	Recombinant
Purification tag / Conjugate:	This RNF212 protein is labelled with GST tag.
Application:	ELISA, Western Blotting (WB), Affinity Purification (AP), Antibody Array (AA)

Product Details

Purpose:	RNF212 (Human) Recombinant Protein (P01)
Sequence:	MANWVFCNRC FQPPHRTSCF SLTNCGHVYC DACLGKGKKN ECLICKAPCR TVLLSKHTDA DIQAFFMSID SLCKKYSRET SQILEFQEKH RKRLAFYRE KISRLEESLR KSVLQIEQLQ SMRSSQQTAF STIKSSVSTK PHGCLLPHS SAPDRLESME VDLSPSPIRK SEIAAGPARI SMISPPQDGR MGPHLTASFC FIPWLTLSPK PVPGEVSR GSPCFIDVC PHWLLLLAFS SGRHGELTNS KTLPIYAEVQ RAVLFPFQQA EGTLDTRTP AVSVVPLCQ FERKKSF
Characteristics:	Human RNF212 full-length ORF (AAI01261.1, 1 a.a. - 297 a.a.) recombinant protein with GST-tag at N-terminal.
Purification:	in vitro wheat germ expression system

Target Details

Target:	RNF212
Alternative Name:	RNF212 (RNF212 Products)
Background:	Full Gene Name: ring finger protein 212 Synonyms: FLJ38841,MGC120227,MGC120228,ZHP3
Gene ID:	285498

Application Details

Application Notes:	Optimal working dilution should be determined by the investigator.
Comment:	Preparation method: in vitro, wheat germ expression system Product Quality tested by: 12.5% SDS-PAGE Stained with Coomassie Blue.
Restrictions:	For Research Use only

Handling

Buffer:	50 mM Tris-HCl, 10 mM reduced Glutathione, pH =8.0 in the elution buffer.
Handling Advice:	Aliquot to avoid repeated freezing and thawing.
Storage:	-80 °C
Storage Comment:	Best use within three months from the date of receipt of this protein.

Images

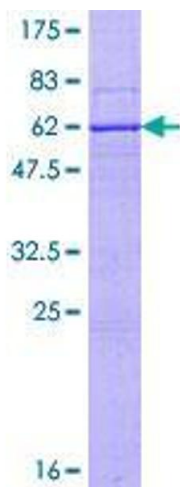


Image 1.