



[Go to Product page](#)

Datasheet for ABIN1318342

## RNF212 Protein (AA 133-232) (GST tag)

### 1 Image

#### Overview

Quantity:	10 µg
Target:	RNF212
Protein Characteristics:	AA 133-232
Origin:	Human
Source:	Wheat germ
Protein Type:	Recombinant
Purification tag / Conjugate:	This RNF212 protein is labelled with GST tag.
Application:	ELISA, Western Blotting (WB), Affinity Purification (AP), Antibody Array (AA)

#### Product Details

Purpose:	RNF212 (Human) Recombinant Protein (Q01)
Sequence:	IKSSVSTKPH GCLLPPHSSA PDRLESMEVD LSPSPIRKSE IAAGPARISM ISPPQDGRMA PCARRVCHFQ RFTMFLHRRL SSLAAPPSVQ FWKARGTHQL
Characteristics:	Human RNF212 partial ORF ( NP_919420, 133 a.a. - 232 a.a.) recombinant protein with GST-tag at N-terminal.
Purification:	in vitro wheat germ expression system

#### Target Details

Target:	RNF212
Alternative Name:	RNF212 ( <a href="#">RNF212 Products</a> )

## Target Details

Background:	Full Gene Name: ring finger protein 212 Synonyms: FLJ38841,MGC120227,MGC120228,ZHP3
Gene ID:	285498
NCBI Accession:	<a href="#">NM_194439</a>

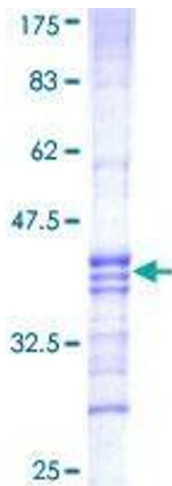
## Application Details

Application Notes:	Optimal working dilution should be determined by the investigator.
Comment:	Preparation method: in vitro, wheat germ expression system Product Quality tested by: 12.5% SDS-PAGE Stained with Coomassie Blue.
Restrictions:	For Research Use only

## Handling

Buffer:	50 mM Tris-HCl, 10 mM reduced Glutathione, pH =8.0 in the elution buffer.
Handling Advice:	Aliquot to avoid repeated freezing and thawing.
Storage:	-80 °C
Storage Comment:	Best use within three months from the date of receipt of this protein.

## Images



**Image 1.**