



[Go to Product page](#)

Datasheet for ABIN1318348

## RNF215 Protein (AA 1-377) (GST tag)

### 1 Image

#### Overview

Quantity:	10 µg
Target:	RNF215
Protein Characteristics:	AA 1-377
Origin:	Human
Source:	Wheat germ
Protein Type:	Recombinant
Purification tag / Conjugate:	This RNF215 protein is labelled with GST tag.
Application:	ELISA, Western Blotting (WB), Affinity Purification (AP), Antibody Array (AA)

#### Product Details

Purpose:	RNF215 (Human) Recombinant Protein (P01)
Sequence:	MGPAARPALR SPPPPPPPPP SPLLLLLPLL PLWLGLAGPG AAADGSEPAA GAGRGGARAV RVDVRLPRQD ALVLEGVRIG SEADPAPLLG GRLLMDIVD AEQEAPVEGW IAVAYVGKEQ AAQFHQENKG SGPQAYPKAL VQQMRRALFL GASALLLIL NHNVVRELDI SLLLLRPVIV LHYSSNVTKL LDALLQRTQA TAEITSGESL SANIEWKLT LWTTCGLSKDG YGGWQDLVCL GGSRAQEQKP LQQLWNAILL VAMLLCTGLV VQAQRQASRQ SQRELGGQVD LFKRRVVRRL ASLKTRRCRL SRAAQGLPDP GAETCAVCLD YFCNKQWLRV LPCKHEFHRL CVDPWMLMQQ TCPLCKFNVL GNRYSDD
Characteristics:	Human RNF215 full-length ORF ( AAI53029.1, 1 a.a. - 377 a.a.) recombinant protein with GST-tag at N-terminal.
Purification:	in vitro wheat germ expression system

## Target Details

Target:	RNF215
Alternative Name:	RNF215 ( <a href="#">RNF215 Products</a> )
Background:	Full Gene Name: ring finger protein 215 Synonyms:
Gene ID:	200312

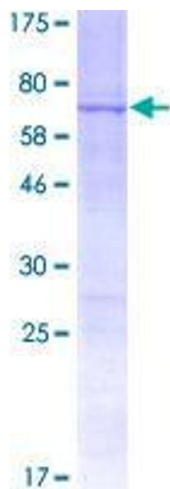
## Application Details

Application Notes:	Optimal working dilution should be determined by the investigator.
Comment:	Preparation method: in vitro, wheat germ expression system Product Quality tested by: 12.5% SDS-PAGE Stained with Coomassie Blue.
Restrictions:	For Research Use only

## Handling

Buffer:	50 mM Tris-HCl, 10 mM reduced Glutathione, pH =8.0 in the elution buffer.
Handling Advice:	Aliquot to avoid repeated freezing and thawing.
Storage:	-80 °C
Storage Comment:	Best use within three months from the date of receipt of this protein.

## Images



**Image 1.**