



[Go to Product page](#)

Datasheet for ABIN1318431

## ROCK1 Protein (AA 401-510) (GST tag)

### 1 Image

#### Overview

Quantity:	10 µg
Target:	ROCK1
Protein Characteristics:	AA 401-510
Origin:	Human
Source:	Wheat germ
Protein Type:	Recombinant
Purification tag / Conjugate:	This ROCK1 protein is labelled with GST tag.
Application:	Western Blotting (WB), ELISA, Affinity Purification (AP), Antibody Array (AA)

#### Product Details

Purpose:	ROCK1 (Human) Recombinant Protein (Q01)
Sequence:	SNRRYLSSAN PNDNRTSSNA DKSLQESLQK TIYKLEEQHLH NEMQLKDEME QKCRTSNIKL DKIMKELDEE GNQRRNLEST VSQIEKEKML LQHRINEYQR KAEQENEKRR
Characteristics:	Human ROCK1 partial ORF ( NP_005397, 401 a.a. - 510 a.a.) recombinant protein with GST-tag at N-terminal.
Purification:	in vitro wheat germ expression system

#### Target Details

Target:	ROCK1
Alternative Name:	ROCK1 ( <a href="#">ROCK1 Products</a> )

## Target Details

Background:	Full Gene Name: Rho-associated, coiled-coil containing protein kinase 1 Synonyms: MGC131603,MGC43611,P160ROCK,PRO0435
Gene ID:	6093
NCBI Accession:	<a href="#">NM_005406</a>
Pathways:	<a href="#">Microtubule Dynamics</a> , <a href="#">WNT Signaling</a> , <a href="#">M Phase</a> , <a href="#">Maintenance of Protein Location</a> , <a href="#">Signaling Events mediated by VEGFR1 and VEGFR2</a> , <a href="#">Thromboxane A2 Receptor Signaling</a>

## Application Details

Application Notes:	Optimal working dilution should be determined by the investigator.
Comment:	Preparation method: in vitro, wheat germ expression system Product Quality tested by: 12.5% SDS-PAGE Stained with Coomassie Blue.
Restrictions:	For Research Use only

## Handling

Buffer:	50 mM Tris-HCl, 10 mM reduced Glutathione, pH =8.0 in the elution buffer.
Handling Advice:	Aliquot to avoid repeated freezing and thawing.
Storage:	-80 °C
Storage Comment:	Best use within three months from the date of receipt of this protein.

## Images

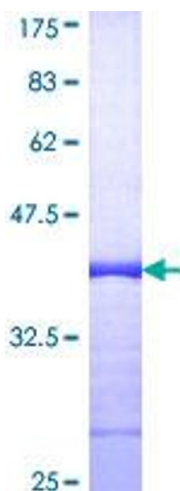


Image 1.