



[Go to Product page](#)

Datasheet for ABIN1318438

ROGDI Protein (AA 1-287) (GST tag)

1 Image

Overview

Quantity:	10 µg
Target:	ROGDI
Protein Characteristics:	AA 1-287
Origin:	Human
Source:	Wheat germ
Protein Type:	Recombinant
Purification tag / Conjugate:	This ROGDI protein is labelled with GST tag.
Application:	ELISA, Western Blotting (WB), Affinity Purification (AP), Antibody Array (AA)

Product Details

Purpose:	ROGDI (Human) Recombinant Protein (P01)
Sequence:	MATVMAATAA ERAVLEEEFR WLLHDEVHAV LKQLQDILKE ASLRFTLPGS GTEGPAKQEN FILGSCGTDQ VKGVLTLQGD ALSQADVNLK MPRNNQLLHF AFREDKQWKL QQIQDARNHV SQAIYLLTSR DQSYQFKTGA EVLKLMDAVM LQLTRARNRL TTPATLTLPE IAASGLTRMF APALPSDLLV NVYINLNKLC LTVYQLHALQ PNSTKNFRPA GGAVLHSPGA MFEWGSQRLE VSHVHKVECV IPWLNDALVY FTVSLQLCQQ LKDKISVFSS YWSYRPF
Characteristics:	Human ROGDI full-length ORF (NP_078865.1, 1 a.a. - 287 a.a.) recombinant protein with GST-tag at N-terminal.
Purification:	in vitro wheat germ expression system

Target Details

Target:	ROGDI
Alternative Name:	ROGDI (ROGDI Products)
Background:	Full Gene Name: rogdi homolog (Drosophila) Synonyms: FLJ22386
Gene ID:	79641
NCBI Accession:	NM_024589

Application Details

Application Notes:	Optimal working dilution should be determined by the investigator.
Comment:	Preparation method: in vitro, wheat germ expression system Product Quality tested by: 12.5% SDS-PAGE Stained with Coomassie Blue.
Restrictions:	For Research Use only

Handling

Buffer:	50 mM Tris-HCl, 10 mM reduced Glutathione, pH =8.0 in the elution buffer.
Handling Advice:	Aliquot to avoid repeated freezing and thawing.
Storage:	-80 °C
Storage Comment:	Best use within three months from the date of receipt of this protein.

Images

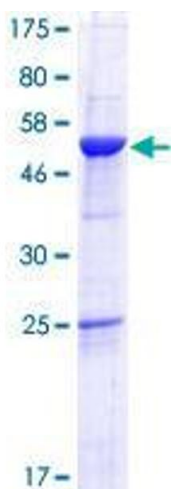


Image 1.