



[Go to Product page](#)

Datasheet for ABIN1318448

## ROPN1L Protein (AA 1-230) (GST tag)

### 1 Image

#### Overview

Quantity:	10 µg
Target:	ROPN1L
Protein Characteristics:	AA 1-230
Origin:	Human
Source:	Wheat germ
Protein Type:	Recombinant
Purification tag / Conjugate:	This ROPN1L protein is labelled with GST tag.
Application:	ELISA, Western Blotting (WB), Affinity Purification (AP), Antibody Array (AA)

#### Product Details

Purpose:	ROPN1L (Human) Recombinant Protein (P01)
Sequence:	MPLPDTMFCA QQIHIPPELP DILKQFTKAA IRTQPADVLR WSAGYFSALS RGDPLPVKDR MEMPTATQKT DTGLTQGLLK VLHKQCHHKR YVELTDLEQK WKNLCLPKEK FKALLQLDPC ENKIKWINFL ALGCSMLGGS LNTALKHLCE ILTDDREGGP ARIPFKTFSY VYRYLARLDS DVSPLETESY LASLKENIDA RKNGMIGLSD FFFPKRKLLS SIENSEDVGH
Characteristics:	Human ROPN1L full-length ORF ( AAH14607.1, 1 a.a. - 230 a.a.) recombinant protein with GST-tag at N-terminal.
Purification:	in vitro wheat germ expression system

#### Target Details

Target:	ROPN1L
---------	--------

## Target Details

Alternative Name:	ROPN1L ( <a href="#">ROPN1L Products</a> )
Background:	Full Gene Name: ropporin 1-like Synonyms: ASP,FLJ23003,FLJ25776
Gene ID:	83853

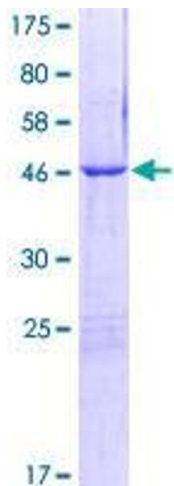
## Application Details

Application Notes:	Optimal working dilution should be determined by the investigator.
Comment:	Preparation method: in vitro, wheat germ expression system Product Quality tested by: 12.5% SDS-PAGE Stained with Coomassie Blue.
Restrictions:	For Research Use only

## Handling

Buffer:	50 mM Tris-HCl, 10 mM reduced Glutathione, pH =8.0 in the elution buffer.
Handling Advice:	Aliquot to avoid repeated freezing and thawing.
Storage:	-80 °C
Storage Comment:	Best use within three months from the date of receipt of this protein.

## Images



**Image 1.**