



[Go to Product page](#)

Datasheet for ABIN1318452  
**ROR2 Protein (AA 34-143) (GST tag)**

1 Image

Overview

Quantity:	10 µg
Target:	ROR2
Protein Characteristics:	AA 34-143
Origin:	Human
Source:	Wheat germ
Protein Type:	Recombinant
Purification tag / Conjugate:	This ROR2 protein is labelled with GST tag.
Application:	Western Blotting (WB), ELISA, Affinity Purification (AP), Antibody Array (AA)

Product Details

Purpose:	ROR2 (Human) Recombinant Protein (Q01)
Sequence:	EVEVLDPNDP LGPLDGQDGP IPTLKGYFLN FLEPVNNITI VQGQTALHC KVAGNPPPNV RWLKNDAPVV QEPRRIIRK TEYGSRLRIQ DLDTTDTGYG QCVATNGMKT
Characteristics:	Human ROR2 partial ORF ( NP_004551, 34 a.a. - 143 a.a.) recombinant protein with GST-tag at N-terminal.
Purification:	in vitro wheat germ expression system

Target Details

Target:	ROR2
Alternative Name:	ROR2 ( <a href="#">ROR2 Products</a> )

## Target Details

Background:	Full Gene Name: receptor tyrosine kinase-like orphan receptor 2 Synonyms: BDB,BDB1,MGC163394,NTRKR2
Gene ID:	4920
NCBI Accession:	<a href="#">NM_004560</a>
Pathways:	<a href="#">RTK Signaling</a> , <a href="#">WNT Signaling</a>

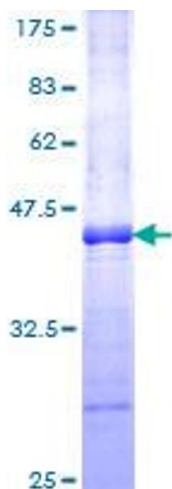
## Application Details

Application Notes:	Optimal working dilution should be determined by the investigator.
Comment:	Preparation method: in vitro, wheat germ expression system Product Quality tested by: 12.5% SDS-PAGE Stained with Coomassie Blue.
Restrictions:	For Research Use only

## Handling

Buffer:	50 mM Tris-HCl, 10 mM reduced Glutathione, pH =8.0 in the elution buffer.
Handling Advice:	Aliquot to avoid repeated freezing and thawing.
Storage:	-80 °C
Storage Comment:	Best use within three months from the date of receipt of this protein.

## Images



**Image 1.**