

Datasheet for ABIN1318476
CT45A3 Protein (AA 1-189) (GST tag)



[Go to Product page](#)

1 Image

Overview

Quantity:	10 µg
Target:	CT45A3
Protein Characteristics:	AA 1-189
Origin:	Human
Source:	Wheat germ
Protein Type:	Recombinant
Purification tag / Conjugate:	This CT45A3 protein is labelled with GST tag.
Application:	ELISA, Western Blotting (WB), Affinity Purification (AP), Antibody Array (AA)

Product Details

Purpose:	CT45A3 (Human) Recombinant Protein (P01)
Sequence:	MTDKTEKVAV DPETVFKRPR ECDSPSYQKR QRMALLARKQ GAGDSLIIAGS AMSKEKKLMT GHAIPPSQLD SQIDDFTGFS KDRMMQKPGS NAPVGGNVTS SFSGDDLECR ETASSPKSQR EINADIKRKL VKELRCVGQK YEKIFEMLEG VQGPTAVRKR FFESIIKEAA RCMRRDFVKH LKKKLRMI
Characteristics:	Human CT45A3 full-length ORF (NP_001017435.1, 1 a.a. - 189 a.a.) recombinant protein with GST-tag at N-terminal.
Purification:	in vitro wheat germ expression system

Target Details

Target:	CT45A3
---------	--------

Target Details

Alternative Name:	CT45A3 (CT45A3 Products)
Background:	Full Gene Name: cancer/testis antigen family 45, member A3 Synonyms: CT45-3,CT45.3
Gene ID:	441519
NCBI Accession:	NM_001017435

Application Details

Application Notes:	Optimal working dilution should be determined by the investigator.
Comment:	Preparation method: in vitro, wheat germ expression system Product Quality tested by: 12.5% SDS-PAGE Stained with Coomassie Blue.
Restrictions:	For Research Use only

Handling

Buffer:	50 mM Tris-HCl, 10 mM reduced Glutathione, pH =8.0 in the elution buffer.
Handling Advice:	Aliquot to avoid repeated freezing and thawing.
Storage:	-80 °C
Storage Comment:	Best use within three months from the date of receipt of this protein.

Images

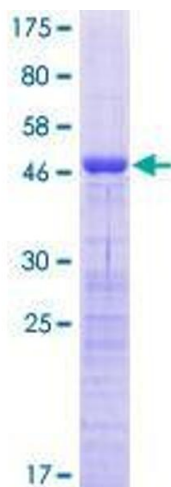


Image 1.