

Datasheet for ABIN1318490
STK26/MST4 Protein (AA 1-137) (GST tag)



[Go to Product page](#)

1 Image

Overview

Quantity:	10 µg
Target:	STK26/MST4 (MST4)
Protein Characteristics:	AA 1-137
Origin:	Human
Source:	Wheat germ
Protein Type:	Recombinant
Purification tag / Conjugate:	This STK26/MST4 protein is labelled with GST tag.
Application:	ELISA, Western Blotting (WB), Affinity Purification (AP), Antibody Array (AA)

Product Details

Purpose:	RP6-213H19.1 (Human) Recombinant Protein (P01)
Sequence:	MAHSPVAVQV PGMQNNIADP EELFTKLERI GKGSFGEVFK GIDNRTQQVV AIKIIDLEEA EDEIEDIQQE ITVLSQCDSS YVTKYYGSYL KGSKLWIIME YLGGGSALDL LRALPPYERS LIQRKYRMGQ SKILCKP
Characteristics:	Human RP6-213H19.1 full-length ORF (AAH17213, 1 a.a. - 137 a.a.) recombinant protein with GST-tag at N-terminal.
Purification:	in vitro wheat germ expression system

Target Details

Target:	STK26/MST4 (MST4)
Alternative Name:	RP6-213H19.1 (MST4 Products)

Target Details

Background: Full Gene Name: serine/threonine protein kinase MST4
Synonyms: MASK,MST4

Gene ID: 51765

Application Details

Application Notes: Optimal working dilution should be determined by the investigator.

Comment: Preparation method: in vitro, wheat germ expression system
Product Quality tested by: 12.5% SDS-PAGE Stained with Coomassie Blue.

Restrictions: For Research Use only

Handling

Buffer: 50 mM Tris-HCl, 10 mM reduced Glutathione, pH =8.0 in the elution buffer.

Handling Advice: Aliquot to avoid repeated freezing and thawing.

Storage: -80 °C

Storage Comment: Best use within three months from the date of receipt of this protein.

Images

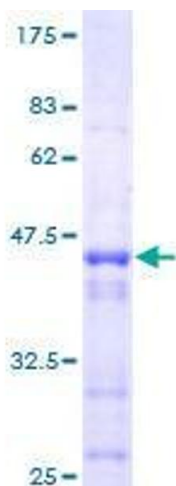


Image 1.