



[Go to Product page](#)

Datasheet for ABIN1318502
RPA2 Protein (AA 1-270) (GST tag)

1 Image

Overview

Quantity:	10 µg
Target:	RPA2
Protein Characteristics:	AA 1-270
Origin:	Human
Source:	Wheat germ
Protein Type:	Recombinant
Purification tag / Conjugate:	This RPA2 protein is labelled with GST tag.
Application:	ELISA, Western Blotting (WB), Affinity Purification (AP), Antibody Array (AA)

Product Details

Purpose:	RPA2 (Human) Recombinant Protein (P01)
Sequence:	MWNSGFESYG SSSYGGAGGY TQSPGGFGSP APSQAEKKSRAAQHIVPCT ISQLLSATLV DEVFRIGNVE ISQVTIVGII RHAEKAPTNI VYKIDDMTAA PMDVRQWVDT DDTSSSENTVW PPETYVKVAG HLRSFQNKKS LVAFKIMPLE DMNEFTTHIL EVINAHMVLS KANSQPSAGR APISNPGMSE AGNFGGNSFM PANGLTVAQN QVLNLIKACP RPEGLNFQDL KNQLKHMSVS SIKQAVDFLS NEGHIYSTVD DDHFKSTDAE
Characteristics:	Human RPA2 full-length ORF (AAH12157, 1 a.a. - 270 a.a.) recombinant protein with GST-tag at N-terminal.
Purification:	in vitro wheat germ expression system

Target Details

Target:	RPA2
Alternative Name:	RPA2 (RPA2 Products)
Background:	Full Gene Name: replication protein A2, 32 kDa Synonyms: REPA2,RPA32
Gene ID:	6118
Pathways:	Telomere Maintenance , DNA Damage Repair , Mitotic G1-G1/S Phases , DNA Replication , Synthesis of DNA

Application Details

Application Notes:	Optimal working dilution should be determined by the investigator.
Comment:	Preparation method: in vitro, wheat germ expression system Product Quality tested by: 12.5% SDS-PAGE Stained with Coomassie Blue.
Restrictions:	For Research Use only

Handling

Buffer:	50 mM Tris-HCl, 10 mM reduced Glutathione, pH =8.0 in the elution buffer.
Handling Advice:	Aliquot to avoid repeated freezing and thawing.
Storage:	-80 °C
Storage Comment:	Best use within three months from the date of receipt of this protein.

Images

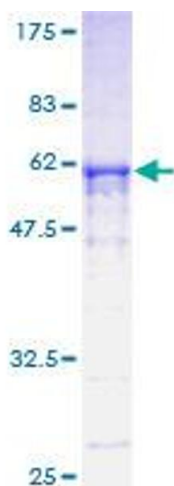


Image 1.