

## Datasheet for ABIN1318532 RPL10L Protein (GST tag)



[Go to Product page](#)

### 1 Image

#### Overview

Quantity:	10 µg
Target:	RPL10L
Origin:	Human
Source:	Wheat germ
Protein Type:	Recombinant
Purification tag / Conjugate:	This RPL10L protein is labelled with GST tag.
Application:	ELISA, Western Blotting (WB), Affinity Purification (AP), Antibody Array (AA)

#### Product Details

Purpose:	RPL10L (Human) Recombinant Protein (P01)
Sequence:	MGRRPARCYR YCKNKYPYKRS RFCRGVPSDAK IRIFDLGRKK AKVDEFPLGG HMVSDEYEQL SSEALEAARI CANKYMKVSKS GRDGFHMRVR LHPFHVIRIN KMLSCAGADR LQTGMRGAFG KPQGTVARVH IGQVIMSIRT KLQNEEHVIE ALRRAKFKFP GRQKIHISKK WGFTKFNAD FEDMVAKKCL IPDGCYKVV PSHGGLDKWR VLHS
Characteristics:	Human RPL10L full-length ORF ( NP_542784.1, 1 a.a. - 214 a.a.) recombinant protein with GST-tag at N-terminal.
Purification:	in vitro wheat germ expression system

#### Target Details

Target:	RPL10L
Alternative Name:	RPL10L ( <a href="#">RPL10L Products</a> )

## Target Details

---

Background: Gene: ribosomal protein L10-like  
Synonyms: FLJ27353

---

Gene ID: 140801

---

NCBI Accession: [NM\\_080746](#)

---

## Application Details

---

Application Notes: Optimal working dilution should be determined by the investigator.

---

Restrictions: For Research Use only

---

## Handling

---

Buffer: 50 mM Tris-HCl, 10 mM reduced Glutathione, pH =8.0 in the elution buffer.

---

Handling Advice: Aliquot to avoid repeated freezing and thawing.

---

Storage: -80 °C

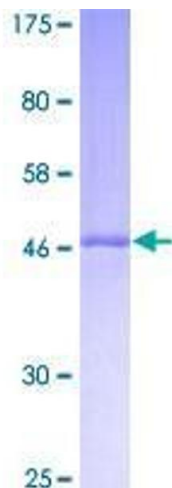
---

Storage Comment: Best use within three months from the date of receipt of this protein.

---

## Images

---



**Image 1.**