

Datasheet for ABIN1318565  
**RPL19 Protein (AA 1-196) (GST tag)**



[Go to Product page](#)

1 Image

Overview

Quantity:	25 µg
Target:	RPL19
Protein Characteristics:	AA 1-196
Origin:	Human
Source:	Wheat germ
Protein Type:	Recombinant
Purification tag / Conjugate:	This RPL19 protein is labelled with GST tag.
Application:	ELISA, Western Blotting (WB), Affinity Purification (AP), Antibody Array (AA)

Product Details

Purpose:	RPL19 (Human) Recombinant Protein (P01)
Sequence:	MSMLRLQKRL ASSVLRGK KVLDPNETN EIANANSRQQ IRKLIKDGLI IRKPVTVHSR ARCRKNTLAR RKGRHMGIGK RKG TANARMP EKVTWMRRMR ILRLLRRYR ESKKIDRHY HSLYLKVKGN VFKNKRILME HIHKLKADKA RKKLLADQAE ARRSKTKEAR KRREERLQAK KEEIIKTL SK EEETKK
Characteristics:	Human RPL19 full-length ORF ( NP_000972.1, 1 a.a. - 196 a.a.) recombinant protein with GST-tag at N-terminal.
Purification:	in vitro wheat germ expression system

Target Details

Target:	RPL19
---------	-------

## Target Details

Alternative Name:	RPL19 ( <a href="#">RPL19 Products</a> )
Background:	Full Gene Name: ribosomal protein L19 Synonyms: DKFZp779D216,FLJ27452,MGC71997
Gene ID:	6143
NCBI Accession:	<a href="#">NM_000981</a>

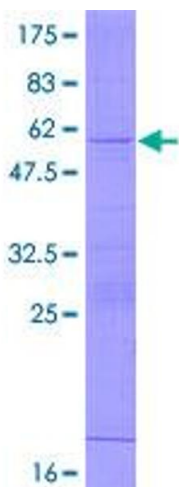
## Application Details

Application Notes:	Optimal working dilution should be determined by the investigator.
Comment:	Preparation method: in vitro, wheat germ expression system Product Quality tested by: 12.5% SDS-PAGE Stained with Coomassie Blue.
Restrictions:	For Research Use only

## Handling

Buffer:	50 mM Tris-HCl, 10 mM reduced Glutathione, pH =8.0 in the elution buffer.
Handling Advice:	Aliquot to avoid repeated freezing and thawing.
Storage:	-80 °C
Storage Comment:	Best use within three months from the date of receipt of this protein.

## Images



**Image 1.**