



[Go to Product page](#)

Datasheet for ABIN1318589

RPL27A Protein (AA 1-148) (GST tag)

1 Image

Overview

Quantity:	25 µg
Target:	RPL27A
Protein Characteristics:	AA 1-148
Origin:	Human
Source:	Wheat germ
Protein Type:	Recombinant
Purification tag / Conjugate:	This RPL27A protein is labelled with GST tag.
Application:	ELISA, Western Blotting (WB), Affinity Purification (AP), Antibody Array (AA)

Product Details

Purpose:	RPL27A (Human) Recombinant Protein (P01)
Sequence:	MPSRLRKTRK LRGHVSHGHG RIGKHRKHPG GRGNAGGLHH HRINFDKYHP GYFGKVGMMKH YHLKRNQSFC PTVNLDKLWT LVSEQTRVNA AKNKTGAAPI IDVVRSGYYK VLGK GKLPKQ PVIVKAKFFS RRAEEKIKSV GGACVLVA
Characteristics:	Human RPL27A full-length ORF (AAH05326, 1 a.a. - 148 a.a.) recombinant protein with GST-tag at N-terminal.
Purification:	in vitro wheat germ expression system

Target Details

Target:	RPL27A
Alternative Name:	RPL27A (RPL27A Products)

Target Details

Background:	Full Gene Name: ribosomal protein L27a Synonyms: FLJ43464,MGC10850,MGC17878,MGC87238
Gene ID:	6157

Application Details

Application Notes:	Optimal working dilution should be determined by the investigator.
Comment:	Preparation method: in vitro, wheat germ expression system Product Quality tested by: 12.5% SDS-PAGE Stained with Coomassie Blue.
Restrictions:	For Research Use only

Handling

Buffer:	50 mM Tris-HCl, 10 mM reduced Glutathione, pH =8.0 in the elution buffer.
Handling Advice:	Aliquot to avoid repeated freezing and thawing.
Storage:	-80 °C
Storage Comment:	Best use within three months from the date of receipt of this protein.

Images

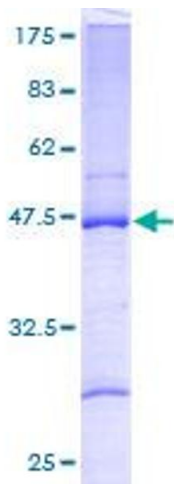


Image 1.