

Datasheet for ABIN1318596  
**RPL29 Protein (AA 1-157) (GST tag)**



[Go to Product page](#)

1 Image

Overview

Quantity:	10 µg
Target:	RPL29
Protein Characteristics:	AA 1-157
Origin:	Human
Source:	Wheat germ
Protein Type:	Recombinant
Purification tag / Conjugate:	This RPL29 protein is labelled with GST tag.
Application:	ELISA, Western Blotting (WB), Affinity Purification (AP), Antibody Array (AA)

Product Details

Purpose:	RPL29 (Human) Recombinant Protein (P01)
Sequence:	MAKSKNHTTH NQSRKWHNRNG IKKPRSQRYE SLKGVDPKFL RNMRFAKKHN KKGLKMQAN NAKAMSARAE AIKALVKPKE VKPKIPKGV S RKLDRLAYIA HPKLGKRARA RIAKGLRLCR PKAKAKAKDQ TKAQAAAPAS VPAQAPKRTQ APTKASE
Characteristics:	Human RPL29 full-length ORF ( NP_000983.1, 1 a.a. - 157 a.a.) recombinant protein with GST-tag at N-terminal.
Purification:	in vitro wheat germ expression system

Target Details

Target:	RPL29
Alternative Name:	RPL29 ( <a href="#">RPL29 Products</a> )

## Target Details

---

Background:	Gene: ribosomal protein L29 Synonyms: HIP, HUMRPL29, MGC88589
Gene ID:	6159

---

## Application Details

---

Application Notes:	Optimal working dilution should be determined by the investigator.
Restrictions:	For Research Use only

---

## Handling

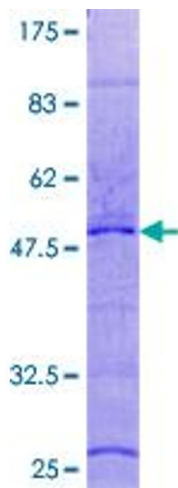
---

Buffer:	50 mM Tris-HCl, 10 mM reduced Glutathione, pH =8.0 in the elution buffer.
Handling Advice:	Aliquot to avoid repeated freezing and thawing.
Storage:	-80 °C
Storage Comment:	Best use within three months from the date of receipt of this protein.

---

## Images

---



**Image 1.**