

Datasheet for ABIN1318602
RPL3 Protein (AA 1-403) (GST tag)



[Go to Product page](#)

1 Image

Overview

Quantity:	10 µg
Target:	RPL3
Protein Characteristics:	AA 1-403
Origin:	Human
Source:	Wheat germ
Protein Type:	Recombinant
Purification tag / Conjugate:	This RPL3 protein is labelled with GST tag.
Application:	ELISA, Western Blotting (WB), Affinity Purification (AP), Antibody Array (AA)

Product Details

Purpose:	RPL3 (Human) Recombinant Protein (P02)
Sequence:	MSHRKFSAPR HGSLGFLPRK RSSRHRGKVK SFPKDDPSKP VHLTAFLGYK AGMTHIVREV DRPGSKVNKK EVVEAVTIVE TPPMWWGIV GYVETPRGLR TFKTVFAEHI SDECKRRFYK NWHKSKKAF TKYCKKWQDE DGKKQLEKDF SSMKKYCQVI RVIAHTQMRL LPLRQKKAHL MEIQVNGGTV AEKLDWARER LEQQVPVNQV FGQDEMIDVI GVTKGKGYKG VTSRWHTKKL PRKTHRGLRK VACIGAWHPA RVAFSVARAG QKGYHHRTEI NKKIYKIGQG YLIKDGKLIK NNASTDYDLS DKSINPLGGF VHGEVTNDF VMLKGCVVGT KKRVLTLRKS LLVQTKRRAL EKIDLKFIDT TSKFGHGRFQ TMEEKKAFMG PLKKDRIAKE EGA
Characteristics:	Human RPL3 full-length ORF (NP_000958.1, 1 a.a. - 403 a.a.) recombinant protein with GST-tag at N-terminal.
Purification:	in vitro wheat germ expression system

Target Details

Target:	RPL3
Alternative Name:	RPL3 (RPL3 Products)
Background:	Full Gene Name: ribosomal protein L3 Synonyms: MGC104284,TARBP-B
Gene ID:	6122
NCBI Accession:	NM_000967

Application Details

Application Notes:	Optimal working dilution should be determined by the investigator.
Comment:	Preparation method: in vitro, wheat germ expression system Product Quality tested by: 12.5% SDS-PAGE Stained with Coomassie Blue.
Restrictions:	For Research Use only

Handling

Buffer:	50 mM Tris-HCl, 10 mM reduced Glutathione, pH =8.0 in the elution buffer.
Handling Advice:	Aliquot to avoid repeated freezing and thawing.
Storage:	-80 °C
Storage Comment:	Best use within three months from the date of receipt of this protein.

Images

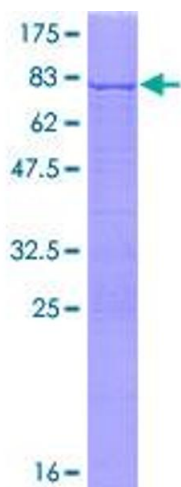


Image 1.