



[Go to Product page](#)

Datasheet for ABIN1318612

## RPL32P3 Protein (AA 1-33) (GST tag)

### 1 Image

#### Overview

Quantity:	10 µg
Target:	RPL32P3
Protein Characteristics:	AA 1-33
Origin:	Human
Source:	Wheat germ
Protein Type:	Recombinant
Purification tag / Conjugate:	This RPL32P3 protein is labelled with GST tag.
Application:	Affinity Purification (AP), Antibody Array (AA), ELISA, Western Blotting (WB)

#### Product Details

Purpose:	LOC132241 (Human) Recombinant Protein (P01)
Sequence:	MAALRSLVKP KIVKKRTKKF IRHQSDRYVK IKR
Characteristics:	Human LOC132241 full-length ORF ( AAH53996.1, 1 a.a. - 33 a.a.) recombinant protein with GST-tag at N-terminal.
Purification:	in vitro wheat germ expression system

#### Target Details

Target:	RPL32P3
Alternative Name:	RPL32P3 ( <a href="#">RPL32P3 Products</a> )
Background:	Full Gene Name: ribosomal protein L32 pseudogene 3

## Target Details

Synonyms:

Gene ID: 132241

## Application Details

Application Notes: Optimal working dilution should be determined by the investigator.

Comment: Preparation method: in vitro, wheat germ expression system  
Product Quality tested by: 12.5% SDS-PAGE Stained with Coomassie Blue.

Restrictions: For Research Use only

## Handling

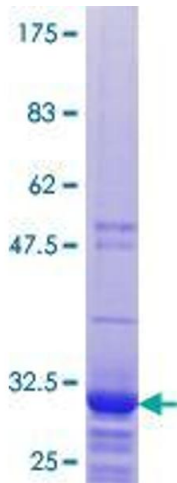
Buffer: 50 mM Tris-HCl, 10 mM reduced Glutathione, pH =8.0 in the elution buffer.

Handling Advice: Aliquot to avoid repeated freezing and thawing.

Storage: -80 °C

Storage Comment: Best use within three months from the date of receipt of this protein.

## Images



**Image 1.**