



[Go to Product page](#)

Datasheet for ABIN1318622

RPL35A Protein (AA 1-110) (GST tag)

1 Image

Overview

Quantity:	10 µg
Target:	RPL35A
Protein Characteristics:	AA 1-110
Origin:	Human
Source:	Wheat germ
Protein Type:	Recombinant
Purification tag / Conjugate:	This RPL35A protein is labelled with GST tag.
Application:	ELISA, Western Blotting (WB), Affinity Purification (AP), Antibody Array (AA)

Product Details

Purpose:	RPL35A (Human) Recombinant Protein (P02)
Sequence:	MSGRLWSKAI FAGYKRGLRN QREHTALLKI EGVYARDETE FYLGKRCAYV YKAKNNTVTP GGKPNKTRVI WGVVTRAHGN SGMVRAKFRS NLPKAIGAHR IRVMLYPSRI
Characteristics:	Human RPL35A full-length ORF (NP_000987.2, 1 a.a. - 110 a.a.) recombinant protein with GST-tag at N-terminal.
Purification:	in vitro wheat germ expression system

Target Details

Target:	RPL35A
Alternative Name:	RPL35A (RPL35A Products)

Target Details

Background: Full Gene Name: ribosomal protein L35a
Synonyms: DBA5

Gene ID: 6165

NCBI Accession: [NM_000996](#)

Application Details

Application Notes: Optimal working dilution should be determined by the investigator.

Comment: Preparation method: in vitro, wheat germ expression system
Product Quality tested by: 12.5% SDS-PAGE Stained with Coomassie Blue.

Restrictions: For Research Use only

Handling

Buffer: 50 mM Tris-HCl, 10 mM reduced Glutathione, pH =8.0 in the elution buffer.

Handling Advice: Aliquot to avoid repeated freezing and thawing.

Storage: -80 °C

Storage Comment: Best use within three months from the date of receipt of this protein.

Images

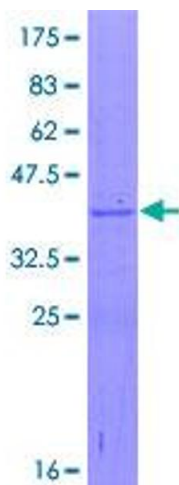


Image 1.