



[Go to Product page](#)

Datasheet for ABIN1318643

## RPL38 Protein (AA 1-70) (GST tag)

### 1 Image

#### Overview

Quantity:	10 µg
Target:	RPL38
Protein Characteristics:	AA 1-70
Origin:	Human
Source:	Wheat germ
Protein Type:	Recombinant
Purification tag / Conjugate:	This RPL38 protein is labelled with GST tag.
Application:	ELISA, Western Blotting (WB), Affinity Purification (AP), Antibody Array (AA)

#### Product Details

Purpose:	RPL38 (Human) Recombinant Protein (Q01)
Sequence:	MPRKIEEIKD FLLTARRKDA KSVKIKKNKD NVKFKVRCRSL YLYTLVITDK EKAELKQSL PPGLAVKELK
Characteristics:	Human RPL38 partial ORF ( NP_000990, 1 a.a. - 70 a.a.) recombinant protein with GST-tag at N-terminal.
Purification:	in vitro wheat germ expression system

#### Target Details

Target:	RPL38
Alternative Name:	RPL38 ( <a href="#">RPL38 Products</a> )

## Target Details

Background:	Full Gene Name: ribosomal protein L38 Synonyms:
Gene ID:	6169
NCBI Accession:	<a href="#">NM_000999</a>
Pathways:	<a href="#">Sensory Perception of Sound</a> , <a href="#">Ribonucleoprotein Complex Subunit Organization</a> , <a href="#">Ribosome Assembly</a>

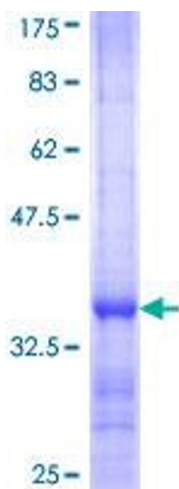
## Application Details

Application Notes:	Optimal working dilution should be determined by the investigator.
Comment:	Preparation method: in vitro, wheat germ expression system Product Quality tested by: 12.5% SDS-PAGE Stained with Coomassie Blue.
Restrictions:	For Research Use only

## Handling

Buffer:	50 mM Tris-HCl, 10 mM reduced Glutathione, pH =8.0 in the elution buffer.
Handling Advice:	Aliquot to avoid repeated freezing and thawing.
Storage:	-80 °C
Storage Comment:	Best use within three months from the date of receipt of this protein.

## Images



**Image 1.**