



[Go to Product page](#)

Datasheet for ABIN1318676  
**RPL9 Protein (AA 93-191) (GST tag)**

1 Image

### Overview

Quantity:	10 µg
Target:	RPL9
Protein Characteristics:	AA 93-191
Origin:	Human
Source:	Wheat germ
Protein Type:	Recombinant
Purification tag / Conjugate:	This RPL9 protein is labelled with GST tag.
Application:	ELISA, Western Blotting (WB), Affinity Purification (AP), Antibody Array (AA)

### Product Details

Purpose:	RPL9 (Human) Recombinant Protein (Q01)
Sequence:	RSVYAHFPIN VVIQENGLSV EIRNFLGEKY IRRVRMRPGV ACSVSQAQKD ELILEGNDIE LVNSAALIQ QATTVKNKDI RKFLDGIYVS EKGTVQQAD
Characteristics:	Human RPL9 partial ORF ( NP_000652, 93 a.a. - 191 a.a.) recombinant protein with GST-tag at N-terminal.
Purification:	in vitro wheat germ expression system

### Target Details

Target:	RPL9
Alternative Name:	RPL9 ( <a href="#">RPL9 Products</a> )

## Target Details

Background:	Gene: ribosomal protein L9 Synonyms: DKFZp313J1510, FLJ27456, MGC15545, NPC-A-16
Gene ID:	6133
NCBI Accession:	<a href="#">NM_000661</a>

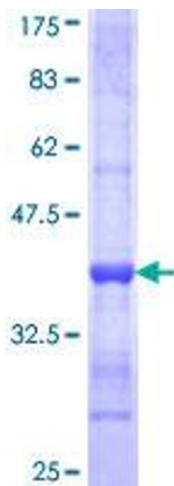
## Application Details

Application Notes:	Optimal working dilution should be determined by the investigator.
Restrictions:	For Research Use only

## Handling

Buffer:	50 mM Tris-HCl, 10 mM reduced Glutathione, pH =8.0 in the elution buffer.
Handling Advice:	Aliquot to avoid repeated freezing and thawing.
Storage:	-80 °C
Storage Comment:	Best use within three months from the date of receipt of this protein.

## Images



**Image 1.**