

Datasheet for ABIN1318717  
**RPRD1B Protein (AA 1-326) (GST tag)**



[Go to Product page](#)

1 Image

## Overview

Quantity:	10 µg
Target:	RPRD1B
Protein Characteristics:	AA 1-326
Origin:	Human
Source:	Wheat germ
Protein Type:	Recombinant
Purification tag / Conjugate:	This RPRD1B protein is labelled with GST tag.
Application:	ELISA, Western Blotting (WB), Affinity Purification (AP), Antibody Array (AA)

## Product Details

Purpose:	C20orf77 (Human) Recombinant Protein (P01)
Sequence:	MSSFESALE KKLSEPSNSQ HSVQTLSSLWL IHHRKHAGPI VSVWHRELK AKSNRKLTFLL YLANDVIQNS KRKGPEFTRE FESVLVDAFS HVAREADEGC KKPLERLLNI WQERSVYGGE FIQQLKLSME DSKSPPPKAT EEKSLKRTF QQIQEEEDDD YPGSCSPQDP SAGPLLTEEL IKALQDLENA ASGDATVRQK IASLPQEVQD VSLLEKITDK EAAERLPKTV DEACLLLAEY NGRLAAELED RRQLARMLVE YTQNQKDVLS EKEKKLEEYK QKLARVTQVR KELKSHIQSL PDLSELLPNVT GGLAPLPSAG DLFSTD
Characteristics:	Human C20orf77 full-length ORF ( AAH33629, 1 a.a. - 326 a.a.) recombinant protein with GST-tag at N-terminal.
Purification:	in vitro wheat germ expression system

## Target Details

Target:	RPRD1B
Alternative Name:	RPRD1B ( <a href="#">RPRD1B Products</a> )
Background:	Full Gene Name: regulation of nuclear pre-mRNA domain containing 1B Synonyms: C20orf77,CREPT,DKFZp434P0735,FLJ44520,dJ1057B20.2
Gene ID:	58490

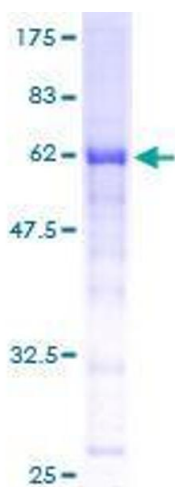
## Application Details

Application Notes:	Optimal working dilution should be determined by the investigator.
Comment:	Preparation method: in vitro, wheat germ expression system Product Quality tested by: 12.5% SDS-PAGE Stained with Coomassie Blue.
Restrictions:	For Research Use only

## Handling

Buffer:	50 mM Tris-HCl, 10 mM reduced Glutathione, pH =8.0 in the elution buffer.
Handling Advice:	Aliquot to avoid repeated freezing and thawing.
Storage:	-80 °C
Storage Comment:	Best use within three months from the date of receipt of this protein.

## Images



**Image 1.**