

Datasheet for ABIN1318772  
**RPS21 Protein (AA 1-81) (GST tag)**



[Go to Product page](#)

1 Image

### Overview

Quantity:	10 µg
Target:	RPS21
Protein Characteristics:	AA 1-81
Origin:	Human
Source:	Wheat germ
Protein Type:	Recombinant
Purification tag / Conjugate:	This RPS21 protein is labelled with GST tag.
Application:	ELISA, Western Blotting (WB), Affinity Purification (AP), Antibody Array (AA)

### Product Details

Purpose:	RPS21 (Human) Recombinant Protein (P01)
Sequence:	MQNDAGEFVD LYVPRKCSAS NRIIGAKDHA SIQMNVAEVD KVTGRFNGQF KTYAICGAIR RMGESDDSIL RLAKADGIVS K
Characteristics:	Human RPS21 full-length ORF ( AAH18140, 1 a.a. - 81 a.a.) recombinant protein with GST-tag at N-terminal.
Purification:	in vitro wheat germ expression system

### Target Details

Target:	RPS21
Alternative Name:	RPS21 ( <a href="#">RPS21 Products</a> )

## Target Details

Background: Full Gene Name: ribosomal protein S21  
Synonyms:

Gene ID: 6227

## Application Details

Application Notes: Optimal working dilution should be determined by the investigator.

Comment: Preparation method: in vitro, wheat germ expression system  
Product Quality tested by: 12.5% SDS-PAGE Stained with Coomassie Blue.

Restrictions: For Research Use only

## Handling

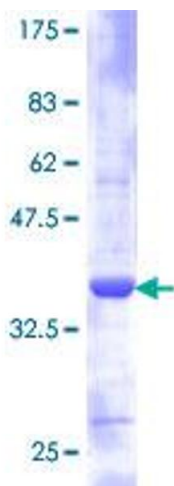
Buffer: 50 mM Tris-HCl, 10 mM reduced Glutathione, pH =8.0 in the elution buffer.

Handling Advice: Aliquot to avoid repeated freezing and thawing.

Storage: -80 °C

Storage Comment: Best use within three months from the date of receipt of this protein.

## Images



**Image 1.**