

Datasheet for ABIN1318797  
**RPS29 Protein (AA 1-56) (GST tag)**



[Go to Product page](#)

1 Image

## Overview

Quantity:	10 µg
Target:	RPS29
Protein Characteristics:	AA 1-56
Origin:	Human
Source:	Wheat germ
Protein Type:	Recombinant
Purification tag / Conjugate:	This RPS29 protein is labelled with GST tag.
Application:	ELISA, Western Blotting (WB), Affinity Purification (AP), Antibody Array (AA)

## Product Details

Purpose:	RPS29 (Human) Recombinant Protein (P01)
Sequence:	MGHQQLYWSH PRKFGQGSRS CRVCSNRHGL IRKYGLNMCR QCFRQYAKDI GFIKLD
Characteristics:	Human RPS29 full-length ORF ( AAH35313, 1 a.a. - 56 a.a.) recombinant protein with GST-tag at N-terminal.
Purification:	in vitro wheat germ expression system

## Target Details

Target:	RPS29
Alternative Name:	RPS29 ( <a href="#">RPS29 Products</a> )
Background:	Full Gene Name: ribosomal protein S29

## Target Details

Synonyms:

Gene ID: 6235

## Application Details

Application Notes: Optimal working dilution should be determined by the investigator.

Comment: Preparation method: in vitro, wheat germ expression system  
Product Quality tested by: 12.5% SDS-PAGE Stained with Coomassie Blue.

Restrictions: For Research Use only

## Handling

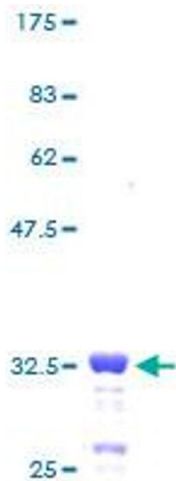
Buffer: 50 mM Tris-HCl, 10 mM reduced Glutathione, pH =8.0 in the elution buffer.

Handling Advice: Aliquot to avoid repeated freezing and thawing.

Storage: -80 °C

Storage Comment: Best use within three months from the date of receipt of this protein.

## Images



### SDS-PAGE

Image 1.