



[Go to Product page](#)

Datasheet for ABIN1318803

RPS3 Protein (AA 144-243) (GST tag)

1 Image

Overview

Quantity:	10 µg
Target:	RPS3
Protein Characteristics:	AA 144-243
Origin:	Human
Source:	Wheat germ
Protein Type:	Recombinant
Purification tag / Conjugate:	This RPS3 protein is labelled with GST tag.
Application:	ELISA, Western Blotting (WB), Affinity Purification (AP), Antibody Array (AA)

Product Details

Purpose:	RPS3 (Human) Recombinant Protein (Q01)
Sequence:	GQRAKSMKFV DGLMIHSGDP VNYVYVDTAVR HVLLRQGVLG IKVKIMLPWD PTGKIGPKKP LPDHVSIVEP KDEILPTTPI SEQKGGKPEP PAMPQPVPTA
Characteristics:	Human RPS3 partial ORF (NP_000996, 144 a.a. - 243 a.a.) recombinant protein with GST-tag at N-terminal.
Purification:	in vitro wheat germ expression system

Target Details

Target:	RPS3
Alternative Name:	RPS3 (RPS3 Products)

Target Details

Background: Full Gene Name: ribosomal protein S3
Synonyms: FLJ26283,FLJ27450,MGC87870

Gene ID: 6188

NCBI Accession: [NM_001005](#)

Pathways: [Positive Regulation of Endopeptidase Activity](#)

Application Details

Application Notes: Optimal working dilution should be determined by the investigator.

Comment: Preparation method: in vitro, wheat germ expression system
Product Quality tested by: 12.5% SDS-PAGE Stained with Coomassie Blue.

Restrictions: For Research Use only

Handling

Buffer: 50 mM Tris-HCl, 10 mM reduced Glutathione, pH =8.0 in the elution buffer.

Handling Advice: Aliquot to avoid repeated freezing and thawing.

Storage: -80 °C

Storage Comment: Best use within three months from the date of receipt of this protein.

Images

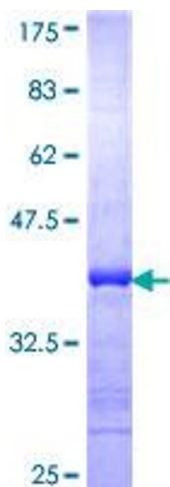


Image 1.