



[Go to Product page](#)

Datasheet for ABIN1318847

RPS6KL1 Protein (AA 1-541) (GST tag)

1 Image

Overview

Quantity:	10 µg
Target:	RPS6KL1
Protein Characteristics:	AA 1-541
Origin:	Human
Source:	Wheat germ
Protein Type:	Recombinant
Purification tag / Conjugate:	This RPS6KL1 protein is labelled with GST tag.
Application:	ELISA, Western Blotting (WB), Affinity Purification (AP), Antibody Array (AA)

Product Details

Purpose:	RPS6KL1 (Human) Recombinant Protein (P01)
Sequence:	MSLVACECLP SPGLEPEPCS RARSQAHVYL EQIRNRVALG VPDMTKRDYL VDAATQIRLA LERDVSEDYE AAFNHYQNGV DVLLRGIHVD PNKERREAVK LKITKYLRRRA EEIFNCHLQR PLSSGASPSA VQLVQDPATG GTFVVKSLPR CHMVSRLT IIPHGVPYMT KLLRYFVSED SIFLHLEHVQ GGTLWSHLLS QAHSRHSGLS SGSTQERMKA QLNPHLNLLT PARLPSGHAP GQDRIALEPP RTSPNLLLAG EAPSTRPQRE AEGEPTARTS TSGSSDLPKA PGGHLHLQAR RAGQNSDAGP PRGLTWVPEG AGPVLGGCGR GMDQSCLSAD GAGRGCGRAT WSVREEQVKQ WAAEMLVALE ALHEQGVLCR DLHPGNLLLD QAGHIRLTYF GQWSEVEPQC CGEAVDNLYS APEVGGISEL TEACDWWVSG SLLYELLTGM ALSQSHPSGI QAHTQLQLPE WLSRPAASLL TELLQFEPTR RLGMGEGGVS KLKSHPPFFST IQWSKLVGTS LETHLRTLIIH WLSGPKPDCP G
Characteristics:	Human RPS6KL1 full-length ORF (NP_113652.1, 1 a.a. - 541 a.a.) recombinant protein with GST-tag at N-terminal.

Product Details

Purification: in vitro wheat germ expression system

Target Details

Target: RPS6KL1

Alternative Name: RPS6KL1 ([RPS6KL1 Products](#))

Background: Full Gene Name: ribosomal protein S6 kinase-like 1
Synonyms: FLJ35734,MGC11287

Gene ID: 83694

NCBI Accession: [NM_031464](#)

Application Details

Application Notes: Optimal working dilution should be determined by the investigator.

Comment: Preparation method: in vitro, wheat germ expression system
Product Quality tested by: 12.5% SDS-PAGE Stained with Coomassie Blue.

Restrictions: For Research Use only

Handling

Buffer: 50 mM Tris-HCl, 10 mM reduced Glutathione, pH =8.0 in the elution buffer.

Handling Advice: Aliquot to avoid repeated freezing and thawing.

Storage: -80 °C

Storage Comment: Best use within three months from the date of receipt of this protein.

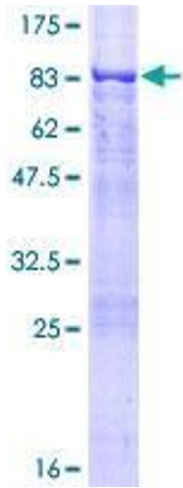


Image 1.