



[Go to Product page](#)

Datasheet for ABIN1318849

RPS6KL1 Protein (AA 2-94) (GST tag)

1 Image

Overview

Quantity:	10 µg
Target:	RPS6KL1
Protein Characteristics:	AA 2-94
Origin:	Human
Source:	Wheat germ
Protein Type:	Recombinant
Purification tag / Conjugate:	This RPS6KL1 protein is labelled with GST tag.
Application:	ELISA, Western Blotting (WB), Affinity Purification (AP), Antibody Array (AA)

Product Details

Purpose:	RPS6KL1 (Human) Recombinant Protein (Q01)
Sequence:	SLVACECLPS PGLEPECSR ARSQAHVYLE QIRNRVALGV PDMTKRDYLV DAATQIRLAL ERDVSEDYEA AFNHYQNGVD VLLRGIHVDP NKE
Characteristics:	Human RPS6KL1 partial ORF (NP_113652, 2 a.a. - 94 a.a.) recombinant protein with GST-tag at N-terminal.
Purification:	in vitro wheat germ expression system

Target Details

Target:	RPS6KL1
Alternative Name:	RPS6KL1 (RPS6KL1 Products)

Target Details

Background:	Full Gene Name: ribosomal protein S6 kinase-like 1 Synonyms: FLJ35734,MGC11287
Gene ID:	83694
NCBI Accession:	NM_031464

Application Details

Application Notes:	Optimal working dilution should be determined by the investigator.
Comment:	Preparation method: in vitro, wheat germ expression system Product Quality tested by: 12.5% SDS-PAGE Stained with Coomassie Blue.
Restrictions:	For Research Use only

Handling

Buffer:	50 mM Tris-HCl, 10 mM reduced Glutathione, pH =8.0 in the elution buffer.
Handling Advice:	Aliquot to avoid repeated freezing and thawing.
Storage:	-80 °C
Storage Comment:	Best use within three months from the date of receipt of this protein.

Images

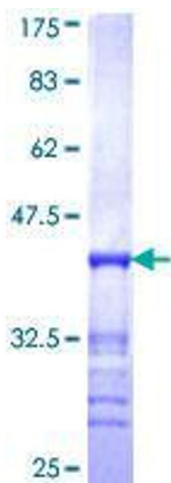


Image 1.