

Datasheet for ABIN1318864

RPSA/Laminin Receptor Protein (AA 1-295) (GST tag)



[Go to Product page](#)

1 Image

Overview

Quantity:	10 µg
Target:	RPSA/Laminin Receptor (RPSA)
Protein Characteristics:	AA 1-295
Origin:	Human
Source:	Wheat germ
Protein Type:	Recombinant
Purification tag / Conjugate:	This RPSA/Laminin Receptor protein is labelled with GST tag.
Application:	ELISA, Western Blotting (WB), Affinity Purification (AP), Antibody Array (AA)

Product Details

Purpose:	RPSA (Human) Recombinant Protein (P01)
Sequence:	MSGALDVLQM KEEDVLKFLA AGTHLGGTNL DFQMEQYIYK RKSDGIYIIN LKRTWEKLLL AARAIVAIEN PADVSVISSR NTGQRAVLKF AAATGATPIA GRFTPGETFTN QIQAAFREPR LLVVTDPRAG HQPLTEASYV NLPTIALCNT DSPLRYVDIA IPCNNKGAHS VGLMWWMLAR EVLRMRGTTIS REHPWEVMPD LYFYRDPEEI EKEEQAAAEEK AVTKKEEFQGE WTAPAPEFTA TQPEVADWSE GVQVPSVPIQ QFPTEDWSAQ PATEDWSAAP TAQATEWVGA TTDWS
Characteristics:	Human RPSA full-length ORF (AAH13827, 1 a.a. - 295 a.a.) recombinant protein with GST-tag at N-terminal.
Purification:	in vitro wheat germ expression system

Target Details

Target:	RPSA/Laminin Receptor (RPSA)
Alternative Name:	RPSA (RPSA Products)
Background:	Full Gene Name: ribosomal protein SA Synonyms: 37LRP,67LR,LAMBR,LAMR1,LRP,p40
Gene ID:	3921
Pathways:	Ribonucleoprotein Complex Subunit Organization , Ribosome Assembly

Application Details

Application Notes:	Optimal working dilution should be determined by the investigator.
Comment:	Preparation method: in vitro, wheat germ expression system Product Quality tested by: 12.5% SDS-PAGE Stained with Coomassie Blue.
Restrictions:	For Research Use only

Handling

Buffer:	50 mM Tris-HCl, 10 mM reduced Glutathione, pH =8.0 in the elution buffer.
Handling Advice:	Aliquot to avoid repeated freezing and thawing.
Storage:	-80 °C
Storage Comment:	Best use within three months from the date of receipt of this protein.

Images

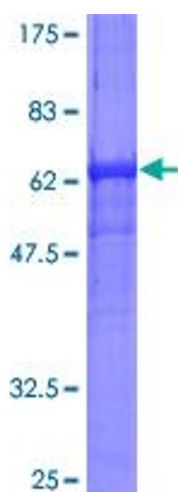


Image 1.