



[Go to Product page](#)

Datasheet for ABIN1318874

RPUSD1 Protein (AA 1-312) (GST tag)

1 Image

Overview

Quantity:	10 µg
Target:	RPUSD1
Protein Characteristics:	AA 1-312
Origin:	Human
Source:	Wheat germ
Protein Type:	Recombinant
Purification tag / Conjugate:	This RPUSD1 protein is labelled with GST tag.
Application:	ELISA, Western Blotting (WB), Affinity Purification (AP), Antibody Array (AA)

Product Details

Purpose:	RPUSD1 (Human) Recombinant Protein (P01)
Sequence:	MEPGSVENLS IVYRSRDFLV VNKHWDVRID SKAWRETLTL QKQLRYRFPE LADPDTCYGF RFCHQLDFST SGALCVALNK AAAGSAYRCF KERRVTKAYL ALLRGGHIQES RVTISHAIGR NSTEGRAHTM CIEGSQGCEN PKPSLTDLVV LEHGLYAGDP VSKVLLKPLT GRTHQLRVHC SALGHPVVG D LTYGEVSGRE DRPFRMMLHA FYLRIPDTE CVEVCTPDF LPSLDACWSP HTLLQSLDQL VQALRATPDP DPEDRGPRPG SPSALLPGPG RPPPPPTKPP ETEAQRGPCL QWLSEWTLEP DS
Characteristics:	Human RPUSD1 full-length ORF (NP_478072.1, 1 a.a. - 312 a.a.) recombinant protein with GST-tag at N-terminal.
Purification:	in vitro wheat germ expression system

Target Details

Target:	RPUSD1
Alternative Name:	RPUSD1 (RPUSD1 Products)
Background:	Full Gene Name: RNA pseudouridylate synthase domain containing 1 Synonyms: C16orf40,MGC19600,RLUCL
Gene ID:	113000
NCBI Accession:	NM_058192

Application Details

Application Notes:	Optimal working dilution should be determined by the investigator.
Comment:	Preparation method: in vitro, wheat germ expression system Product Quality tested by: 12.5% SDS-PAGE Stained with Coomassie Blue.
Restrictions:	For Research Use only

Handling

Buffer:	50 mM Tris-HCl, 10 mM reduced Glutathione, pH =8.0 in the elution buffer.
Handling Advice:	Aliquot to avoid repeated freezing and thawing.
Storage:	-80 °C
Storage Comment:	Best use within three months from the date of receipt of this protein.

Images

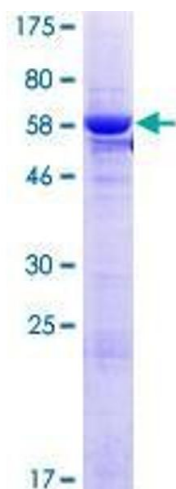


Image 1.