



Datasheet for ABIN1318925
RSBN1 Protein (AA 1-411) (GST tag)



[Go to Product page](#)

1 Image

Overview

Quantity:	25 µg
Target:	RSBN1
Protein Characteristics:	AA 1-411
Origin:	Human
Source:	Wheat germ
Protein Type:	Recombinant
Purification tag / Conjugate:	This RSBN1 protein is labelled with GST tag.
Application:	ELISA, Western Blotting (WB), Affinity Purification (AP), Antibody Array (AA)

Product Details

Purpose:	RSBN1 (Human) Recombinant Protein (P01)
Sequence:	MAAQVGAVRV VRAVAAQEPP DKEGKEKPHA GVSPRGVQRQ RRSSSGGSQE KRGRPSQEPP LAPPHRRRRS RQHPGPLPPT NAAPTVPGPV ELLLLPPPPP PSLAPAGPAV AAPLPAPSTS ALFTFSPLTV SAAGPKHKGH KERHKHHHHR GPDGDPSSCG TDLKHKDKQE NGERTGGVPL IKAPKRETPD ENGKTQRADD FVLKKIKKKK KKKHREDMRG RRLKMYNKEV QTVCAGLTRI SKEILTQQQI NSTSGLNKES FRYLKDEQLC RLNLGMQEYR VPQGVQTPFM THQEHSIRRN FLKTGTKFSN FIHEEHQSNG GALVLHAYMD ELSFLSPMEM ERFSEEFLAL TFSENEKNAA YYALAIVHGA AAYLPDFLDY FAFNFPNTPV KMEILGKKDI ETTTISNFHT Q
Characteristics:	Human RSBN1 full-length ORF (AAH26155.1, 1 a.a. - 411 a.a.) recombinant protein with GST-tag at N-terminal.
Purification:	in vitro wheat germ expression system

Target Details

Target:	RSBN1
Alternative Name:	RSBN1 (RSBN1 Products)
Background:	Full Gene Name: round spermatid basic protein 1 Synonyms: DKFZp781E21150,ROSBIN,RP11-324J2.1
Gene ID:	54665

Application Details

Application Notes:	Optimal working dilution should be determined by the investigator.
Comment:	Preparation method: in vitro, wheat germ expression system Product Quality tested by: 12.5% SDS-PAGE Stained with Coomassie Blue.
Restrictions:	For Research Use only

Handling

Buffer:	50 mM Tris-HCl, 10 mM reduced Glutathione, pH =8.0 in the elution buffer.
Handling Advice:	Aliquot to avoid repeated freezing and thawing.
Storage:	-80 °C
Storage Comment:	Best use within three months from the date of receipt of this protein.

Images

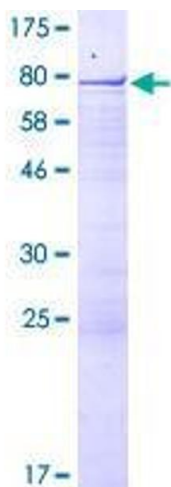


Image 1.