

Datasheet for ABIN1318929

RSF1 Protein (AA 1343-1441) (GST tag)



[Go to Product page](#)

1 Image

Overview

Quantity:	10 µg
Target:	RSF1
Protein Characteristics:	AA 1343-1441
Origin:	Human
Source:	Wheat germ
Protein Type:	Recombinant
Purification tag / Conjugate:	This RSF1 protein is labelled with GST tag.
Application:	ELISA, Western Blotting (WB), Affinity Purification (AP), Antibody Array (AA)

Product Details

Purpose:	HBXAP (Human) Recombinant Protein (Q01)
Sequence:	IESDEEEDFE NVGKVGSPLD YSLVDLPSTN GQSPGKAIEN LIGKPTEKSQ TPKDNSTASA SLASNGTSGG QEAGAPEEEEE DELLRVTDLV DYVCNSEQL
Characteristics:	Human HBXAP partial ORF (NP_057662.3, 1343 a.a. - 1441 a.a.) recombinant protein with GST-tag at N-terminal.
Purification:	in vitro wheat germ expression system

Target Details

Target:	RSF1
Alternative Name:	RSF1 (RSF1 Products)

Target Details

Background: Full Gene Name: remodeling and spacing factor 1
Synonyms: HBXAP,RSF-1,XAP8,p325

Gene ID: 51773

NCBI Accession: [NM_016578](#)

Application Details

Application Notes: Optimal working dilution should be determined by the investigator.

Comment: Preparation method: in vitro, wheat germ expression system
Product Quality tested by: 12.5% SDS-PAGE Stained with Coomassie Blue.

Restrictions: For Research Use only

Handling

Buffer: 50 mM Tris-HCl, 10 mM reduced Glutathione, pH =8.0 in the elution buffer.

Handling Advice: Aliquot to avoid repeated freezing and thawing.

Storage: -80 °C

Storage Comment: Best use within three months from the date of receipt of this protein.

Images

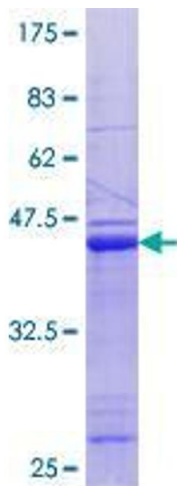


Image 1.