

Datasheet for ABIN1318931

RSPH6A Protein (AA 21-113) (GST tag)[Go to Product page](#)**1** Image

Overview

Quantity:	10 µg
Target:	RSPH6A
Protein Characteristics:	AA 21-113
Origin:	Human
Source:	Wheat germ
Protein Type:	Recombinant
Purification tag / Conjugate:	This RSPH6A protein is labelled with GST tag.
Application:	ELISA, Western Blotting (WB), Affinity Purification (AP), Antibody Array (AA)

Product Details

Purpose:	RSHL1 (Human) Recombinant Protein (Q01)
Sequence:	SQASQRRHSR DQAQALAADP EERQQIPPDA QRNAPGWSQR GSLSQQENLL MPQVFQAEAA RLGGMEYPSV NTGFPSEFQP QPYSDESRMQ VAE
Characteristics:	Human RSHL1 partial ORF (NP_110412, 21 a.a. - 113 a.a.) recombinant protein with GST-tag at N-terminal.
Purification:	in vitro wheat germ expression system

Target Details

Target:	RSPH6A
Alternative Name:	RSHL1 (RSPH6A Products)

Target Details

Background: Full Gene Name: radial spokehead-like 1
Synonyms: RSP4,RSP6

Gene ID: 81492

NCBI Accession: [NM_030785](#)

Application Details

Application Notes: Optimal working dilution should be determined by the investigator.

Comment: Preparation method: in vitro, wheat germ expression system
Product Quality tested by: 12.5% SDS-PAGE Stained with Coomassie Blue.

Restrictions: For Research Use only

Handling

Buffer: 50 mM Tris-HCl, 10 mM reduced Glutathione, pH =8.0 in the elution buffer.

Handling Advice: Aliquot to avoid repeated freezing and thawing.

Storage: -80 °C

Storage Comment: Best use within three months from the date of receipt of this protein.

Images

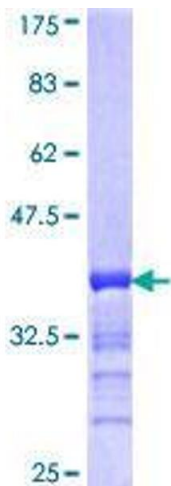


Image 1.