

Datasheet for ABIN1318992

## RUNX1 Protein (AA 210-310) (GST tag)



[Go to Product page](#)

### 1 Image

#### Overview

Quantity:	10 µg
Target:	RUNX1
Protein Characteristics:	AA 210-310
Origin:	Human
Source:	Wheat germ
Protein Type:	Recombinant
Purification tag / Conjugate:	This RUNX1 protein is labelled with GST tag.
Application:	Western Blotting (WB), ELISA, Affinity Purification (AP), Antibody Array (AA)

#### Product Details

Purpose:	RUNX1 (Human) Recombinant Protein (Q01)
Sequence:	RVSPHHPAPT PNPASLNHS TAFNPQPQSQ MQDTRQIQPS PPWSYDQSYQ YLGSIASPSV HPATPISPGR ASGMTTLSAE LSSRLSTAPD LTAFSDPRQF P
Characteristics:	Human RUNX1 partial ORF ( NP_001001890.1, 210 a.a. - 310 a.a.) recombinant protein with GST-tag at N-terminal.
Purification:	in vitro wheat germ expression system

#### Target Details

Target:	RUNX1
Alternative Name:	RUNX1 ( <a href="#">RUNX1 Products</a> )

## Target Details

---

Background:	Full Gene Name: runt-related transcription factor 1 Synonyms: AML1,AML1-EVI-1,AML1CR1,CBFA2,EVI-1,PEBP2aB
Gene ID:	861
NCBI Accession:	<a href="#">NM_001001890</a>

## Application Details

---

Application Notes:	Optimal working dilution should be determined by the investigator.
Comment:	Preparation method: in vitro, wheat germ expression system Product Quality tested by: 12.5% SDS-PAGE Stained with Coomassie Blue.
Restrictions:	For Research Use only

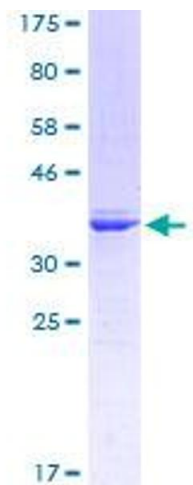
## Handling

---

Buffer:	50 mM Tris-HCl, 10 mM reduced Glutathione, pH =8.0 in the elution buffer.
Handling Advice:	Aliquot to avoid repeated freezing and thawing.
Storage:	-80 °C
Storage Comment:	Best use within three months from the date of receipt of this protein.

## Images

---



**Image 1.**