



[Go to Product page](#)

Datasheet for ABIN1318996  
**RUNX1T1 Protein (AA 416-525) (GST tag)**

1 Image

Overview

Quantity:	10 µg
Target:	RUNX1T1
Protein Characteristics:	AA 416-525
Origin:	Human
Source:	Wheat germ
Protein Type:	Recombinant
Purification tag / Conjugate:	This RUNX1T1 protein is labelled with GST tag.
Application:	ELISA, Western Blotting (WB), Affinity Purification (AP), Antibody Array (AA)

Product Details

Purpose:	RUNX1T1 (Human) Recombinant Protein (Q01)
Sequence:	EEIWKKAEEA VNEVKRQAMT ELQKAVSEAE RKAHDMITTE RAKMERTVAE AKRQAAEDAL AVINQQEDSS ESCWNCGRKA SETCSGCNTA RYCGSFCQHK DWEKHHHICG
Characteristics:	Human RUNX1T1 partial ORF ( NP_004340, 416 a.a. - 525 a.a.) recombinant protein with GST-tag at N-terminal.
Purification:	in vitro wheat germ expression system

Target Details

Target:	RUNX1T1
Alternative Name:	RUNX1T1 ( <a href="#">RUNX1T1 Products</a> )

## Target Details

Background:	Full Gene Name: runt-related transcription factor 1, translocated to, 1 (cyclin D-related) Synonyms: AML1T1,CBFA2T1,CDR,ETO,MGC2796,MTG8,MTG8b,ZMYND2
Gene ID:	862
NCBI Accession:	<a href="#">NM_004349</a>

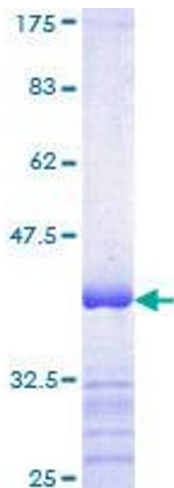
## Application Details

Application Notes:	Optimal working dilution should be determined by the investigator.
Comment:	Preparation method: in vitro, wheat germ expression system Product Quality tested by: 12.5% SDS-PAGE Stained with Coomassie Blue.
Restrictions:	For Research Use only

## Handling

Buffer:	50 mM Tris-HCl, 10 mM reduced Glutathione, pH =8.0 in the elution buffer.
Handling Advice:	Aliquot to avoid repeated freezing and thawing.
Storage:	-80 °C
Storage Comment:	Best use within three months from the date of receipt of this protein.

## Images



**Image 1.**