

Datasheet for ABIN1319004  
**RUSC1 Protein (AA 1-433) (GST tag)**



[Go to Product page](#)

1 Image

Overview

Quantity:	25 µg
Target:	RUSC1
Protein Characteristics:	AA 1-433
Origin:	Human
Source:	Wheat germ
Protein Type:	Recombinant
Purification tag / Conjugate:	This RUSC1 protein is labelled with GST tag.
Application:	ELISA, Western Blotting (WB), Affinity Purification (AP), Antibody Array (AA)

Product Details

Purpose:	RUSC1 (Human) Recombinant Protein (P01)
Sequence:	MAEAQSGTGQ LQEQKGLLI AVSVSVDKII SHFGAARNLV QKAQLGDSRL SPDVGHLVLT TLCPALHALV ADGLKPFKRD LITGQRRSSP WSVVEASVKP GSSTRSLGTL YSQVSRLAPL SSSRSRFHAF ILGLLNTKQL ELWFSSLQED AGLLSLLYLP TGFFSLARGG CPSLSTELL LLQPLSVLTF HLDLLFEHHH HLPLGPPQAP APPGPPALQ QTMQAMLHFG GRLAQSLRGT SKEAASDPSD SPNLPTPGSW WEQLTQASRV YASGGTEGFP LSRWAPGRHG TAAEEGAQER PLPTDEMAPG RGLWLGRFLG VPGGPAENEN GALKSRRPSS WLPPTVSVLA LVKRGAPPEM PSPQELEASA PRMVQTHRAV RALCDHTAAR PDQLSFRRGE VLRVITVDE DWLRCGRDGM EGLVPVGYTS LVL
Characteristics:	Human RUSC1 full-length ORF ( NP_055143.2, 1 a.a. - 433 a.a.) recombinant protein with GST-tag at N-terminal.

## Product Details

---

Purification: in vitro wheat germ expression system

## Target Details

---

Target: RUSC1

Alternative Name: RUSC1 ([RUSC1 Products](#))

Background: Full Gene Name: RUN and SH3 domain containing 1  
Synonyms: DKFZp761A1822,NESCA

Gene ID: 23623

NCBI Accession: [NM\\_014328](#)

## Application Details

---

Application Notes: Optimal working dilution should be determined by the investigator.

Comment: Preparation method: in vitro, wheat germ expression system  
Product Quality tested by: 12.5% SDS-PAGE Stained with Coomassie Blue.

Restrictions: For Research Use only

## Handling

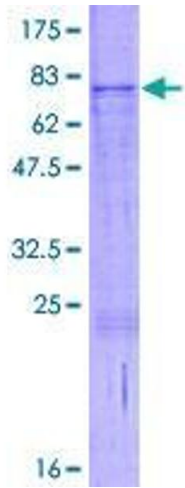
---

Buffer: 50 mM Tris-HCl, 10 mM reduced Glutathione, pH =8.0 in the elution buffer.

Handling Advice: Aliquot to avoid repeated freezing and thawing.

Storage: -80 °C

Storage Comment: Best use within three months from the date of receipt of this protein.



**Image 1.**