

Datasheet for ABIN1319009
RUVBL2 Protein (AA 353-462) (GST tag)



[Go to Product page](#)

1 Image

Overview

Quantity:	10 µg
Target:	RUVBL2
Protein Characteristics:	AA 353-462
Origin:	Human
Source:	Wheat germ
Protein Type:	Recombinant
Purification tag / Conjugate:	This RUVBL2 protein is labelled with GST tag.
Application:	ELISA, Western Blotting (WB), Affinity Purification (AP), Antibody Array (AA)

Product Details

Purpose:	RUVBL2 (Human) Recombinant Protein (Q01)
Sequence:	RLIVSTTPY SEKDTKQILR IRCEEEDVEM SEDAYTVLTR IGLTSLRYA IQLITAASLV CRKRKGTEVQ VDDIKRVYSL FLDESRSTQY MKEYQDAFLF NELKGETMDT
Characteristics:	Human RUVBL2 partial ORF (NP_006657, 353 a.a. - 462 a.a.) recombinant protein with GST-tag at N-terminal.
Purification:	in vitro wheat germ expression system

Target Details

Target:	RUVBL2
Alternative Name:	RUVBL2 (RUVBL2 Products)

Target Details

Background:	Full Gene Name: RuvB-like 2 (E. coli) Synonyms: CGI-46,ECP51,INO80J,REPTIN,RVB2,TIH2,TIP48,TIP49B
Gene ID:	10856
NCBI Accession:	NM_006666
Pathways:	Telomere Maintenance

Application Details

Application Notes:	Optimal working dilution should be determined by the investigator.
Comment:	Preparation method: in vitro, wheat germ expression system Product Quality tested by: 12.5% SDS-PAGE Stained with Coomassie Blue.
Restrictions:	For Research Use only

Handling

Buffer:	50 mM Tris-HCl, 10 mM reduced Glutathione, pH =8.0 in the elution buffer.
Handling Advice:	Aliquot to avoid repeated freezing and thawing.
Storage:	-80 °C
Storage Comment:	Best use within three months from the date of receipt of this protein.

Images

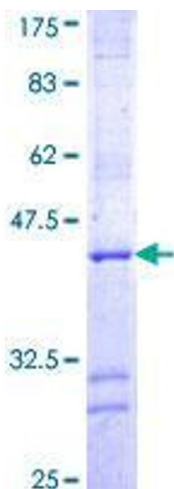


Image 1.