



[Go to Product page](#)

Datasheet for ABIN1319013
RWDD2A Protein (AA 1-292) (GST tag)

1 Image

Overview

Quantity:	10 µg
Target:	RWDD2A
Protein Characteristics:	AA 1-292
Origin:	Human
Source:	Wheat germ
Protein Type:	Recombinant
Purification tag / Conjugate:	This RWDD2A protein is labelled with GST tag.
Application:	ELISA, Western Blotting (WB), Affinity Purification (AP), Antibody Array (AA)

Product Details

Purpose:	RWDD2A (Human) Recombinant Protein (P01)
Sequence:	MSASVKESLQ LQLLEMMLF SMFPNQGEVK LEDVNALTNI KRYLEGTREA LPPKIEFVIT LQIEEPKVKI DLQVTMPHSY PYLALQLFGR SSELDRHQQL LLNKGLTSYI GTFDPGELCV CAAIQWLQDN SASYFLNRKL VYEPSTQAKP VKNTFLRMWI YSHHIYQQDL RKKILDVIGKR LDVTGFCMTG KPGIICVEGF KEHCEEFWHT IRYPNWKHIS CKHAESVETE GNGEDLRLFH SFEELLLLEAH GDYGLRNDYH MNLGQFLEFL KKHKSEHVFQ ILFGIESKSS DS
Characteristics:	Human RWDD2A full-length ORF (NP_219479.1, 1 a.a. - 292 a.a.) recombinant protein with GST-tag at N-terminal.
Purification:	in vitro wheat germ expression system

Target Details

Target:	RWDD2A
Alternative Name:	RWDD2A (RWDD2A Products)
Background:	Full Gene Name: RWD domain containing 2A Synonyms: MGC13523,MGC138208,RWDD2,dJ747H23.2
Gene ID:	112611
NCBI Accession:	NM_033411

Application Details

Application Notes:	Optimal working dilution should be determined by the investigator.
Comment:	Preparation method: in vitro, wheat germ expression system Product Quality tested by: 12.5% SDS-PAGE Stained with Coomassie Blue.
Restrictions:	For Research Use only

Handling

Buffer:	50 mM Tris-HCl, 10 mM reduced Glutathione, pH =8.0 in the elution buffer.
Handling Advice:	Aliquot to avoid repeated freezing and thawing.
Storage:	-80 °C
Storage Comment:	Best use within three months from the date of receipt of this protein.

Images

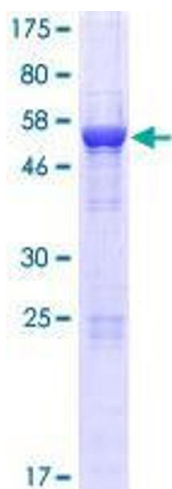


Image 1.