



[Go to Product page](#)

Datasheet for ABIN1319019

RXFP1 Protein (AA 68-162) (GST tag)

1 Image

Overview

Quantity:	10 µg
Target:	RXFP1
Protein Characteristics:	AA 68-162
Origin:	Human
Source:	Wheat germ
Protein Type:	Recombinant
Purification tag / Conjugate:	This RXFP1 protein is labelled with GST tag.
Application:	Western Blotting (WB), ELISA, Affinity Purification (AP), Antibody Array (AA)

Product Details

Purpose:	LGR7 (Human) Recombinant Protein (Q01)
Sequence:	WSMQFDKYFA SYYKMTSQYP FEAETPECLV GSVPVQCLCQ GLELDCDET N LRAVPSVSSN VTAMSLQWNL IRKLPPDCFK NYHDLQKLYL QNNKI
Characteristics:	Human LGR7 partial ORF (NP_067647, 68 a.a. - 162 a.a.) recombinant protein with GST-tag at N-terminal.
Purification:	in vitro wheat germ expression system

Target Details

Target:	RXFP1
Alternative Name:	RXFP1 (RXFP1 Products)

Target Details

Background:	Full Gene Name: relaxin/insulin-like family peptide receptor 1 Synonyms: LGR7,LGR7.1,LGR7.10,LGR7.2,MGC138347,MGC142177,RXFPR1
Gene ID:	59350
NCBI Accession:	NM_021634
Pathways:	Myometrial Relaxation and Contraction

Application Details

Application Notes:	Optimal working dilution should be determined by the investigator.
Comment:	Preparation method: in vitro, wheat germ expression system Product Quality tested by: 12.5% SDS-PAGE Stained with Coomassie Blue.
Restrictions:	For Research Use only

Handling

Buffer:	50 mM Tris-HCl, 10 mM reduced Glutathione, pH =8.0 in the elution buffer.
Handling Advice:	Aliquot to avoid repeated freezing and thawing.
Storage:	-80 °C
Storage Comment:	Best use within three months from the date of receipt of this protein.

Images

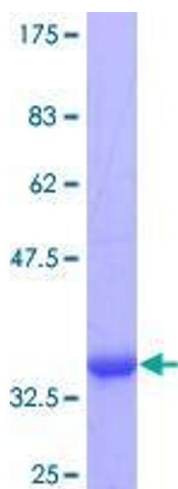


Image 1.