



[Go to Product page](#)

Datasheet for ABIN1319074

S100A8 Protein (AA 1-92) (GST tag)

1 Image

Overview

Quantity:	10 µg
Target:	S100A8
Protein Characteristics:	AA 1-92
Origin:	Human
Source:	Wheat germ
Protein Type:	Recombinant
Purification tag / Conjugate:	This S100A8 protein is labelled with GST tag.
Application:	Western Blotting (WB), ELISA, Affinity Purification (AP), Antibody Array (AA)

Product Details

Purpose:	S100A8 (Human) Recombinant Protein (Q01)
Sequence:	MLTELEKALN SIIDVYHKYS LIKGNFHAVY RDDLKLLLET ECPQYIRKKG ADVWFKELDI NTDGA VNFQE FLILVIKMGV AAHKKSHEES HK
Characteristics:	Human S100A8 partial ORF (NP_002955, 1 a.a. - 92 a.a.) recombinant protein with GST-tag at N-terminal.
Purification:	in vitro wheat germ expression system

Target Details

Target:	S100A8
Alternative Name:	S100A8 (S100A8 Products)

Target Details

Background:	Full Gene Name: S100 calcium binding protein A8 Synonyms: 60B8AG,CAGA,CFAG,CGLA,CP-10,L1Ag,MA387,MIF,MRP8,NIF,P8
Gene ID:	6279
NCBI Accession:	NM_002964
Pathways:	Transition Metal Ion Homeostasis , Positive Regulation of Endopeptidase Activity , S100 Proteins

Application Details

Application Notes:	Optimal working dilution should be determined by the investigator.
Comment:	Preparation method: in vitro, wheat germ expression system Product Quality tested by: 12.5% SDS-PAGE Stained with Coomassie Blue.
Restrictions:	For Research Use only

Handling

Buffer:	50 mM Tris-HCl, 10 mM reduced Glutathione, pH =8.0 in the elution buffer.
Handling Advice:	Aliquot to avoid repeated freezing and thawing.
Storage:	-80 °C
Storage Comment:	Best use within three months from the date of receipt of this protein.

Images

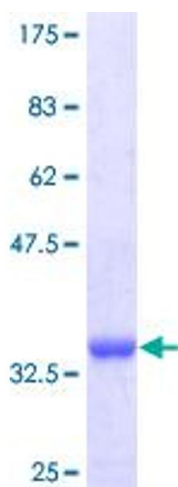


Image 1.