



[Go to Product page](#)

Datasheet for ABIN1319086

## S100PBP Protein (AA 1-408) (GST tag)

### 1 Image

#### Overview

Quantity:	25 µg
Target:	S100PBP
Protein Characteristics:	AA 1-408
Origin:	Human
Source:	Wheat germ
Protein Type:	Recombinant
Purification tag / Conjugate:	This S100PBP protein is labelled with GST tag.
Application:	ELISA, Western Blotting (WB), Affinity Purification (AP), Antibody Array (AA)

#### Product Details

Purpose:	S100PBP (Human) Recombinant Protein (P01)
Sequence:	MMCSRVPSEQ SSGTSLLPKD GAPFSWDSL D EDGLDDSLLE LSEGEEDDGD VNYTEEEIDA LLKEDDPSYE QSSGEDDGGH VEKGERGSQI LLDTPREKNS SYSLGPVAET PDLFKLPQLS TSSGHGPAHT KPLNRRSVLE KNLIKVTVAP FNPTVCDALL DKDET DSSKD TEKLSSLGEE MREDGLSPNE SKLCTESEGI SPNNSAWNGP QLSSSNNNFQ QTVSDKNMPD SENPTSVFSR ISDHSETPNM ELSCRNGGSH KSSCEMRSLV VSTSSNKQDV LNKDSGKMKG HERRLGKVIP VLQTKTRTNV PTFSQSNLEQ QKQLYLRSVI AHIEDPEDTN QGISGELCAL MDQVHHMQHS KWQHPSDLTT RNYARRQKHL QRYSLTQWVD RNMRRSHHRFQ RLPDFSYS
Characteristics:	Human S100PBP full-length ORF ( NP_073590.2, 1 a.a. - 408 a.a.) recombinant protein with GST-tag at N-terminal.
Purification:	in vitro wheat germ expression system

## Target Details

Target:	S100PBP
Alternative Name:	S100PBP ( <a href="#">S100PBP Products</a> )
Background:	Full Gene Name: S100P binding protein Synonyms: DKFZp313K2325,FLJ12903,S100PBPR
Gene ID:	64766
NCBI Accession:	<a href="#">NM_022753</a>

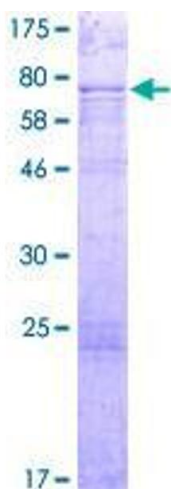
## Application Details

Application Notes:	Optimal working dilution should be determined by the investigator.
Comment:	Preparation method: in vitro, wheat germ expression system Product Quality tested by: 12.5% SDS-PAGE Stained with Coomassie Blue.
Restrictions:	For Research Use only

## Handling

Buffer:	50 mM Tris-HCl, 10 mM reduced Glutathione, pH =8.0 in the elution buffer.
Handling Advice:	Aliquot to avoid repeated freezing and thawing.
Storage:	-80 °C
Storage Comment:	Best use within three months from the date of receipt of this protein.

## Images



**Image 1.**