



[Go to Product page](#)

Datasheet for ABIN1319130

SAMD3 Protein (AA 1-221) (GST tag)

1 Image

Overview

Quantity:	25 µg
Target:	SAMD3
Protein Characteristics:	AA 1-221
Origin:	Human
Source:	Wheat germ
Protein Type:	Recombinant
Purification tag / Conjugate:	This SAMD3 protein is labelled with GST tag.
Application:	ELISA, Western Blotting (WB), Affinity Purification (AP), Antibody Array (AA)

Product Details

Purpose:	SAMD3 (Human) Recombinant Protein (P01)
Sequence:	METWSVEQVC SWLVEKNLGE LVHRFQEEEV SGAALLALND RMVQQLVKKI GHQAVLMDLI KKYKQNTQGL KSPENPKKAA LVMQTEAARD YRDKESSSPA RHGEQMPSFY PAENLDNGLI DQRVLKQRRN VKQILARSKA LQWTKSYVLP EFPYDVKCML AEQKCPDHSM RIRIIEFLQA DMTKYLEGSL YPSTQQYNDV VNALLQAHPF LDEDGCGFAG V
Characteristics:	Human SAMD3 full-length ORF (AAH29851.1, 1 a.a. - 221 a.a.) recombinant protein with GST-tag at N-terminal.
Purification:	in vitro wheat germ expression system

Target Details

Target:	SAMD3
---------	-------

Target Details

Alternative Name:	SAMD3 (SAMD3 Products)
Background:	Full Gene Name: sterile alpha motif domain containing 3 Synonyms: FLJ34563,MGC35163
Gene ID:	154075

Application Details

Application Notes:	Optimal working dilution should be determined by the investigator.
Comment:	Preparation method: in vitro, wheat germ expression system Product Quality tested by: 12.5% SDS-PAGE Stained with Coomassie Blue.
Restrictions:	For Research Use only

Handling

Buffer:	50 mM Tris-HCl, 10 mM reduced Glutathione, pH =8.0 in the elution buffer.
Handling Advice:	Aliquot to avoid repeated freezing and thawing.
Storage:	-80 °C
Storage Comment:	Best use within three months from the date of receipt of this protein.

Images

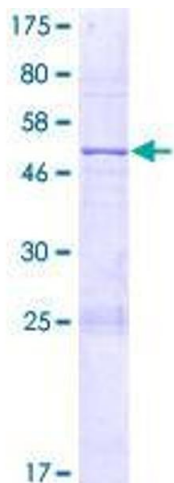


Image 1.