



[Go to Product page](#)

Datasheet for ABIN1319131

SAMD4A Protein (AA 1-247) (GST tag)

1 Image

Overview

Quantity:	10 µg
Target:	SAMD4A
Protein Characteristics:	AA 1-247
Origin:	Human
Source:	Wheat germ
Protein Type:	Recombinant
Purification tag / Conjugate:	This SAMD4A protein is labelled with GST tag.
Application:	ELISA, Western Blotting (WB), Affinity Purification (AP), Antibody Array (AA)

Product Details

Purpose:	SAMD4A (Human) Recombinant Protein (P01)
Sequence:	MMFRDQVGVL AGWFKGWNEC EQTVALLSLL KRVSQTQARF LQLCLEHSLA DCAELHVLER EANSPGIINQ WQQESKDKVI SLLLTHLPLL KPGNLDAKVE YMKLLPKTLA HSIEHNQHIE ESRQLLSYAL IHPATSLEDR SALAMWLNHL EDRTSTSFSGG QNRGRSDSVD YGQTHYYHQ QNSDDKLNQW QNSRDSGICI NASNWQDKSM GCENGHVPLY SSSSVPTTIN TIGTSTSTSK FPGIPLT
Characteristics:	Human SAMD4A full-length ORF (AAH57838.1, 1 a.a. - 247 a.a.) recombinant protein with GST-tag at N-terminal.
Purification:	in vitro wheat germ expression system

Target Details

Target:	SAMD4A
Alternative Name:	SAMD4A (SAMD4A Products)
Background:	Full Gene Name: sterile alpha motif domain containing 4A Synonyms: DKFZp434H0350,KIAA1053,SAMD4,SMG,SMGA,Smaug,Smaug1
Gene ID:	23034

Application Details

Application Notes:	Optimal working dilution should be determined by the investigator.
Comment:	Preparation method: in vitro, wheat germ expression system Product Quality tested by: 12.5% SDS-PAGE Stained with Coomassie Blue.
Restrictions:	For Research Use only

Handling

Buffer:	50 mM Tris-HCl, 10 mM reduced Glutathione, pH =8.0 in the elution buffer.
Handling Advice:	Aliquot to avoid repeated freezing and thawing.
Storage:	-80 °C
Storage Comment:	Best use within three months from the date of receipt of this protein.

Images

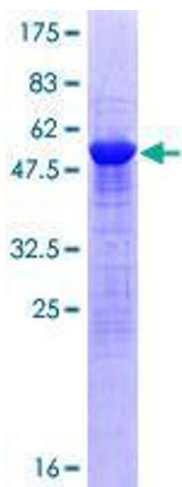


Image 1.