



[Go to Product page](#)

Datasheet for ABIN1319148

## SAP30 Protein (AA 131-219) (GST tag)

### 1 Image

#### Overview

Quantity:	10 µg
Target:	SAP30
Protein Characteristics:	AA 131-219
Origin:	Human
Source:	Wheat germ
Protein Type:	Recombinant
Purification tag / Conjugate:	This SAP30 protein is labelled with GST tag.
Application:	ELISA, Western Blotting (WB), Affinity Purification (AP), Antibody Array (AA)

#### Product Details

Purpose:	SAP30 (Human) Recombinant Protein (Q01)
Sequence:	SDDDGGDSPV QDIDTPEVDL YQLQVNTLRR YKRHFKLPTTR PGLNKAQLVE IVGCHFRSIP VNEKDTLTLYF IYSVKNDKNK SDLKVDSGV
Characteristics:	Human SAP30 partial ORF ( NP_003855, 131 a.a. - 219 a.a.) recombinant protein with GST-tag at N-terminal.
Purification:	in vitro wheat germ expression system

#### Target Details

Target:	SAP30
Alternative Name:	SAP30 ( <a href="#">SAP30 Products</a> )

## Target Details

Background:	Full Gene Name: Sin3A-associated protein, 30 kDa Synonyms:
Gene ID:	8819
NCBI Accession:	<a href="#">NM_003864</a>

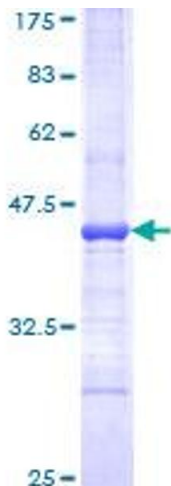
## Application Details

Application Notes:	Optimal working dilution should be determined by the investigator.
Comment:	Preparation method: in vitro, wheat germ expression system Product Quality tested by: 12.5% SDS-PAGE Stained with Coomassie Blue.
Restrictions:	For Research Use only

## Handling

Buffer:	50 mM Tris-HCl, 10 mM reduced Glutathione, pH =8.0 in the elution buffer.
Handling Advice:	Aliquot to avoid repeated freezing and thawing.
Storage:	-80 °C
Storage Comment:	Best use within three months from the date of receipt of this protein.

## Images



**Image 1.**