



[Go to Product page](#)

Datasheet for ABIN1319156

## SAR1B Protein (AA 1-198) (GST tag)

### 1 Image

#### Overview

Quantity:	10 µg
Target:	SAR1B
Protein Characteristics:	AA 1-198
Origin:	Human
Source:	Wheat germ
Protein Type:	Recombinant
Purification tag / Conjugate:	This SAR1B protein is labelled with GST tag.
Application:	ELISA, Western Blotting (WB), Affinity Purification (AP), Antibody Array (AA)

#### Product Details

Purpose:	SARA2 (Human) Recombinant Protein (P01)
Sequence:	MSFIFDWIYS GFSSVLQFLG LYKKTGKLVF LGLDNAGKTT LLHMLKDDRL GQHVPTLHPT SEELTIAGMT FTTFDLGGHV QARRVWKNYL PAINGIVFLV DCADHERLLE SKEELDSLMT DETIANVPIL ILGNKIDRPE AISEERLREM FGLYGQTTGK GSISLKELNA RPLEVFMCSV LKRQGYGEGF RWMAQYID
Characteristics:	Human SARA2 full-length ORF ( AAH02847, 1 a.a. - 198 a.a.) recombinant protein with GST-tag at N-terminal.
Purification:	in vitro wheat germ expression system

#### Target Details

Target:	SAR1B
---------	-------

## Target Details

Alternative Name:	SAR1B ( <a href="#">SAR1B Products</a> )
Background:	Full Gene Name: SAR1 homolog B ( <i>S. cerevisiae</i> ) Synonyms: CMRD,GTBPB,SARA2
Gene ID:	51128
Pathways:	<a href="#">Lipid Metabolism</a>

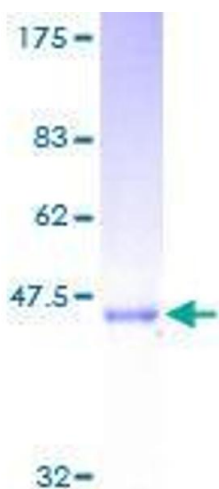
## Application Details

Application Notes:	Optimal working dilution should be determined by the investigator.
Comment:	Preparation method: in vitro, wheat germ expression system Product Quality tested by: 12.5% SDS-PAGE Stained with Coomassie Blue.
Restrictions:	For Research Use only

## Handling

Buffer:	50 mM Tris-HCl, 10 mM reduced Glutathione, pH =8.0 in the elution buffer.
Handling Advice:	Aliquot to avoid repeated freezing and thawing.
Storage:	-80 °C
Storage Comment:	Best use within three months from the date of receipt of this protein.

## Images



### SDS-PAGE

Image 1.