

Datasheet for ABIN1319162
SART1 Protein (AA 1-800) (GST tag)



[Go to Product page](#)

1 Image

Overview

Quantity:	25 µg
Target:	SART1
Protein Characteristics:	AA 1-800
Origin:	Human
Source:	Wheat germ
Protein Type:	Recombinant
Purification tag / Conjugate:	This SART1 protein is labelled with GST tag.
Application:	ELISA, Western Blotting (WB), Affinity Purification (AP), Antibody Array (AA)

Product Details

Purpose:	SART1 (Human) Recombinant Protein (P01)
Sequence:	MGSSKKHRGE KEAAGTAAA GTGGATEQPP RHREHKHKHKH RSGSGGGSGG ERRKRSRERG GERGSGRRGA EAEARSSTHG RERSQAEPSE RRVKREKRDD GYEAASSKT SSGDASSLSI EETNKLRAKL GLKPLEVNAI KKEAGTKEEP VTADVINPMA LRQREELREK LAAAKEKRLL NQKLGKIKTL GEDDPWLDDT AAWIERSRQL QKEKDIAEKR AKLLEEMDQE FGVSTLVEEE FGQRRQDLYS ARDLQGLTVE HAIDSFREGE TMILTLKDKG VLQEEEDVLV NVNLVDKERA EKNVELRKKK PDYLPYAEDE SVDDLAQQKP RSILSKYDEE LEGERPHSFR LEQGGTADGL RERELEEIRA KLRLQAQSLV TVGPRLASEY LTPEEMVTFK KTKRRVKKIR KKEKEVVVRA DDLLPLGDQT QDGDGFSRLR GRGRRRVSEV EEEKEPVPQP LPSDDTRVEN MDISDEEEGG APPPGSPQVL EEDEAELELQ KQLEKGRRLR QLQQLQLRD SGEKVVEIVK KLESRQRGWE EDEDPERKGA IVFNATSEFC RTLGEIPTYG LAGNREEQEE LMDFERDEER SANGGSESDG EENIGWSTVN LDEEKQQQDF SASSTILDE EPIVNRGLAA ALLLCQNKGL LETTVQKVAR

Product Details

VKAPNKS LPS AVYCIEDKMA IDDKYSRREE YRGFTQDFKE KDGYPDVKI EYVDETGRKL
TPKEAFRQLS HRFHGKGS GK MKTERRMKKL DEEALLKKMS SSDTPLGTVA LLQEKKQAQK
TPYIVLSGSG KSMNANTITK

Characteristics: Human SART1 full-length ORF (NP_005137.1, 1 a.a. - 800 a.a.) recombinant protein with GST-tag at N-terminal.

Purification: in vitro wheat germ expression system

Target Details

Target: SART1

Alternative Name: SART1 ([SART1 Products](#))

Background: Full Gene Name: squamous cell carcinoma antigen recognized by T cells
Synonyms: Ara1,HOMS1,MGC2038,SART1259,SNRNP110,Snu66

Gene ID: 9092

NCBI Accession: [NM_005146](#)

Pathways: [Ribonucleoprotein Complex Subunit Organization](#)

Application Details

Application Notes: Optimal working dilution should be determined by the investigator.

Comment: Preparation method: in vitro, wheat germ expression system
Product Quality tested by: 12.5% SDS-PAGE Stained with Coomassie Blue.

Restrictions: For Research Use only

Handling

Buffer: 50 mM Tris-HCl, 10 mM reduced Glutathione, pH =8.0 in the elution buffer.

Handling Advice: Aliquot to avoid repeated freezing and thawing.

Storage: -80 °C

Storage Comment: Best use within three months from the date of receipt of this protein.

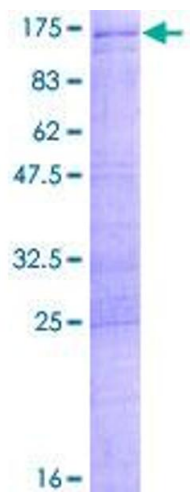


Image 1.