



[Go to Product page](#)

Datasheet for ABIN1319174

SAT1 Protein (AA 88-171) (GST tag)

1 Image

1 Publication

Overview

Quantity:	10 µg
Target:	SAT1
Protein Characteristics:	AA 88-171
Origin:	Human
Source:	Wheat germ
Protein Type:	Recombinant
Purification tag / Conjugate:	This SAT1 protein is labelled with GST tag.
Application:	Western Blotting (WB), ELISA, Affinity Purification (AP), Antibody Array (AA)

Product Details

Purpose:	SAT (Human) Recombinant Protein (Q01)
Sequence:	LLYLEDFVVM SDYRGFGIGS EILKNLSQVA MRCRCSSMHF LVAEWNPSI NFKRRGASD LSSEEGWRLF KIDKEYLLKM ATEE
Characteristics:	Human SAT partial ORF (NP_002961, 88 a.a. - 171 a.a.) recombinant protein with GST-tag at N-terminal.
Purification:	in vitro wheat germ expression system

Target Details

Target:	SAT1
Alternative Name:	SAT1 (SAT1 Products)

Target Details

Background:	Full Gene Name: spermidine/spermine N1-acetyltransferase 1 Synonyms: DC21,KFSD,SAT,SSAT,SSAT-1
Gene ID:	6303
NCBI Accession:	NM_002970

Application Details

Application Notes:	Optimal working dilution should be determined by the investigator.
Comment:	Preparation method: in vitro, wheat germ expression system Product Quality tested by: 12.5% SDS-PAGE Stained with Coomassie Blue.
Restrictions:	For Research Use only

Handling

Buffer:	50 mM Tris-HCl, 10 mM reduced Glutathione, pH =8.0 in the elution buffer.
Handling Advice:	Aliquot to avoid repeated freezing and thawing.
Storage:	-80 °C
Storage Comment:	Best use within three months from the date of receipt of this protein.

Publications

Product cited in:	Sun, Liu, Yang, Xu, Yan, Wang, Liu: "Adenovirus-mediated expression of SSAT inhibits colorectal cancer cell growth in vitro." in: Acta pharmacologica Sinica , Vol. 29, Issue 5, pp. 606-13, (2008) (PubMed).
-------------------	--

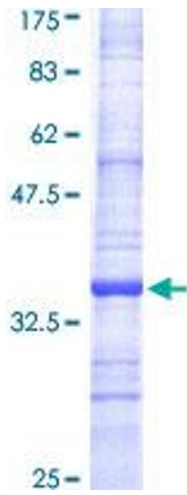


Image 1.