



[Go to Product page](#)

Datasheet for ABIN1319198

Leprecan-Like 4 Protein (LEPREL4) (AA 270-379) (GST tag)

1 Image

Overview

Quantity:	10 µg
Target:	Leprecan-Like 4 (LEPREL4)
Protein Characteristics:	AA 270-379
Origin:	Human
Source:	Wheat germ
Protein Type:	Recombinant
Purification tag / Conjugate:	This Leprecan-Like 4 protein is labelled with GST tag.
Application:	Affinity Purification (AP), Antibody Array (AA), ELISA, Western Blotting (WB)

Product Details

Purpose:	SC65 (Human) Recombinant Protein (Q01)
Sequence:	QCKVDCEANL TPNVGGYFVD KFBATMYHYL QFAYYKLNDV RQAARSAASY MLFDPKDSVM QQNLVYYRFH RARWGLEEED FQPREEAMLY HNQTAEAREL LEFTHMYLQS
Characteristics:	Human SC65 partial ORF (NP_006446, 270 a.a. - 379 a.a.) recombinant protein with GST-tag at N-terminal.
Purification:	in vitro wheat germ expression system

Target Details

Target:	Leprecan-Like 4 (LEPREL4)
Alternative Name:	SC65 (LEPREL4 Products)

Target Details

Background:	Full Gene Name: synaptonemal complex protein SC65 Synonyms: NOL55
Gene ID:	10609
NCBI Accession:	NM_006455

Application Details

Application Notes:	Optimal working dilution should be determined by the investigator.
Comment:	Preparation method: in vitro, wheat germ expression system Product Quality tested by: 12.5% SDS-PAGE Stained with Coomassie Blue.
Restrictions:	For Research Use only

Handling

Buffer:	50 mM Tris-HCl, 10 mM reduced Glutathione, pH =8.0 in the elution buffer.
Handling Advice:	Aliquot to avoid repeated freezing and thawing.
Storage:	-80 °C
Storage Comment:	Best use within three months from the date of receipt of this protein.

Images

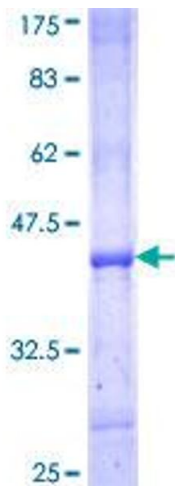


Image 1.