



[Go to Product page](#)

Datasheet for ABIN1319221

## SCARB2 Protein (AA 339-437) (GST tag)

### 1 Image

#### Overview

Quantity:	10 µg
Target:	SCARB2
Protein Characteristics:	AA 339-437
Origin:	Human
Source:	Wheat germ
Protein Type:	Recombinant
Purification tag / Conjugate:	This SCARB2 protein is labelled with GST tag.
Application:	ELISA, Western Blotting (WB), Affinity Purification (AP), Antibody Array (AA)

#### Product Details

Purpose:	SCARB2 (Human) Recombinant Protein (Q01)
Sequence:	FPHFYQADER FVSAIEGMHP NQEDHETFVD INPLTGIILK AAKRFQINIY VKKLDDFVET GDIRTMVFPV MYLNESVHID KETASRLKSM INTTLIITN
Characteristics:	Human SCARB2 partial ORF ( NP_005497, 339 a.a. - 437 a.a.) recombinant protein with GST-tag at N-terminal.
Purification:	in vitro wheat germ expression system

#### Target Details

Target:	SCARB2
Alternative Name:	SCARB2 ( <a href="#">SCARB2 Products</a> )

## Target Details

Background:	Full Gene Name: scavenger receptor class B, member 2 Synonyms: AMRF,CD36L2,HLGP85,LIMP11,SR-B11
Gene ID:	950
NCBI Accession:	<a href="#">NM_005506</a>

## Application Details

Application Notes:	Optimal working dilution should be determined by the investigator.
Comment:	Preparation method: in vitro, wheat germ expression system Product Quality tested by: 12.5% SDS-PAGE Stained with Coomassie Blue.
Restrictions:	For Research Use only

## Handling

Buffer:	50 mM Tris-HCl, 10 mM reduced Glutathione, pH =8.0 in the elution buffer.
Handling Advice:	Aliquot to avoid repeated freezing and thawing.
Storage:	-80 °C
Storage Comment:	Best use within three months from the date of receipt of this protein.

## Images

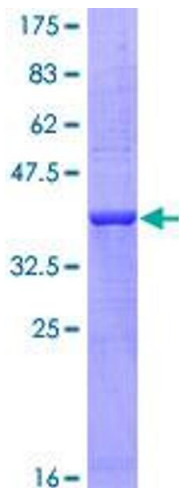


Image 1.