

Datasheet for ABIN1319223
SCEL Protein (AA 1-668) (GST tag)



[Go to Product page](#)

1 Image

Overview

Quantity:	10 µg
Target:	SCEL
Protein Characteristics:	AA 1-668
Origin:	Human
Source:	Wheat germ
Protein Type:	Recombinant
Purification tag / Conjugate:	This SCEL protein is labelled with GST tag.
Application:	Western Blotting (WB), ELISA, Affinity Purification (AP), Antibody Array (AA)

Product Details

Purpose:	SCEL (Human) Recombinant Protein (P01)
Sequence:	MSNVTLRKMS PTGNEMKSTT QGTRKQDF HEVNKRRTFL QNSWIKKRP EEEKDENYGR VVLNRHNSHD ALDRKVNERD VPKATISRY SDDTLDRISD RNDAAKTYKA NTLDNQLTNR SMSVFRSLEV TKLQPGGSLN ANTSNTIAST SATTPVKKKR QSWFPPPPP YNASSSTGTR RREPGVHPPPI PPKPSSPVSS TNQLRQDNRQ IHPPKPGVYT ETNRS AERNI SEELDNLIK M NKSLNRNQGL DSLFRANPKV EEREKRAKSL ESLIYMSTRT DKDGKGIQSL GSPIKVNQRT DKNEKGRQNL ESVAKVNARM NKTSRRSEDL DNATEVNP KG HENTTGKKDL DGLIKVDPET NKNITRGQSL DNLIKVTPEV KRSNQGSKDL NNFIVYPGT EKSTEGGQSL DSLIKVTPER NRTNQGNQDL ENLIKVIPSA NKSSEQGLDE HINVSPKAVK NTDGKQDL DK LIKVNPEIFT NNQRNQDLAN LIKVNPAVIR NNQSQDLN DL IKVKPSALRN TNRDQNL ENL IEVNSHVSEN KNGSSNTGAK QAGPQDTVY TRTYVENS KS PKDGYQENIS GKYIQT VYST SDRSVIERDM CTYCRKPLGV ETKMILDELQ ICCHSTCFKC EICKQPLENL QAGDSIWIYR QTIHCEPCYS

Product Details

KIMAKWIP

Characteristics: Human SCEL full-length ORF (AAH47536.1, 1 a.a. - 668 a.a.) recombinant protein with GST-tag at N-terminal.

Purification: in vitro wheat germ expression system

Target Details

Target: SCEL

Alternative Name: SCEL ([SCEL Products](#))

Background: Full Gene Name: sciellin
Synonyms: FLJ21667,MGC22531

Gene ID: 8796

Application Details

Application Notes: Optimal working dilution should be determined by the investigator.

Comment: Preparation method: in vitro, wheat germ expression system
Product Quality tested by: 12.5% SDS-PAGE Stained with Coomassie Blue.

Restrictions: For Research Use only

Handling

Buffer: 50 mM Tris-HCl, 10 mM reduced Glutathione, pH =8.0 in the elution buffer.

Handling Advice: Aliquot to avoid repeated freezing and thawing.

Storage: -80 °C

Storage Comment: Best use within three months from the date of receipt of this protein.

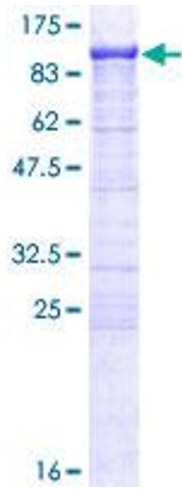


Image 1.