



[Go to Product page](#)

Datasheet for ABIN1319227

## SCFD1 Protein (AA 1-575) (GST tag)

### 1 Image

#### Overview

Quantity:	25 µg
Target:	SCFD1
Protein Characteristics:	AA 1-575
Origin:	Human
Source:	Wheat germ
Protein Type:	Recombinant
Purification tag / Conjugate:	This SCFD1 protein is labelled with GST tag.
Application:	ELISA, Western Blotting (WB), Affinity Purification (AP), Antibody Array (AA)

#### Product Details

Purpose:	SCFD1 (Human) Recombinant Protein (P01)
Sequence:	MGITLHLLHH SDRDPIPDVP AVYFVMPTEE NIDRMCQDLR NQLYESYYLN FISAI SRSL EDIANAALAA SAVTQVAKVF DQYLNFILE DDMFVLCNQN KELVSYRAIN RPDITDTEME TVMDTIVDSL FCFVTLGAV PIIRCSRGTA AEMVAVKLDK KLRENLRDAR NSLFTGDTLG AGQFSFQRPL LVLVDRNIDL ATPLHHTWTY QALVHDVLDL HLNRVNLEES SGVENSPAGA RPKRKNKKS Y DLTPVDKFWQ KHGSPFPEV AESVQQELES YRAQEDEVKR LKSIMGLEGE DEGAISMLSD NTAKLTSAVS SLPELLEKKR LIDLHTNVAT AVLEHIKARK LDVYFEYEEK IMSKTTLDKS LLDIISDPDA GTPEDKMRLF LIYISTQQA PSEADLEQYK KALTDAGCNL NPLQYIKQWK AFTKMASAPA SYGSTTTKPM GLLSRVMNTG SQFVMEGVKN LVLKQQNLPV TRILDNLMEM KSNPETDDYR YFDPKMLRGN DSSVPRNKNP FQEAVFVVG GGNIEYQNL VDYIKGKQ GK HILYGCESELF NATQFIKQLS QLGQK
Characteristics:	Human SCFD1 full-length ORF ( NP_878255.1, 1 a.a. - 575 a.a.) recombinant protein with GST-

## Product Details

---

tag at N-terminal.

Purification: in vitro wheat germ expression system

## Target Details

---

Target: SCFD1

Alternative Name: SCFD1 ([SCFD1 Products](#))

Background: Full Gene Name: sec1 family domain containing 1  
Synonyms: C14orf163,KIAA0917,RA410,SLY1,STXBP1L2

Gene ID: 23256

NCBI Accession: [NM\\_182835](#)

## Application Details

---

Application Notes: Optimal working dilution should be determined by the investigator.

Comment: Preparation method: in vitro, wheat germ expression system  
Product Quality tested by: 12.5% SDS-PAGE Stained with Coomassie Blue.

Restrictions: For Research Use only

## Handling

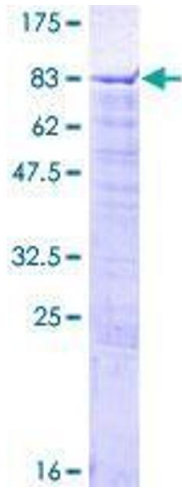
---

Buffer: 50 mM Tris-HCl, 10 mM reduced Glutathione, pH =8.0 in the elution buffer.

Handling Advice: Aliquot to avoid repeated freezing and thawing.

Storage: -80 °C

Storage Comment: Best use within three months from the date of receipt of this protein.



**Image 1.**