



[Go to Product page](#)

Datasheet for ABIN1319257

SCLY Protein (AA 346-444) (GST tag)

1 Image

Overview

Quantity:	10 µg
Target:	SCLY
Protein Characteristics:	AA 346-444
Origin:	Human
Source:	Wheat germ
Protein Type:	Recombinant
Purification tag / Conjugate:	This SCLY protein is labelled with GST tag.
Application:	ELISA, Western Blotting (WB), Affinity Purification (AP), Antibody Array (AA)

Product Details

Purpose:	SCLY (Human) Recombinant Protein (Q01)
Sequence:	NSQFPGTQRL PNTCNFSIRG PRLQGHVLA QCRVLMASVG AACHSDHGDQ PSPVLLSYGV PFDVARNALR LSVGRSTTRA EVDLVVQDLK QAVAQLEDQ
Characteristics:	Human SCLY partial ORF (NP_057594, 346 a.a. - 444 a.a.) recombinant protein with GST-tag at N-terminal.
Purification:	in vitro wheat germ expression system

Target Details

Target:	SCLY
Alternative Name:	SCLY (SCLY Products)

Target Details

Background: Full Gene Name: selenocysteine lyase
Synonyms: SCL

Gene ID: 51540

NCBI Accession: [NM_016510](#)

Pathways: [Stem Cell Maintenance](#)

Application Details

Application Notes: Optimal working dilution should be determined by the investigator.

Comment: Preparation method: in vitro, wheat germ expression system
Product Quality tested by: 12.5% SDS-PAGE Stained with Coomassie Blue.

Restrictions: For Research Use only

Handling

Buffer: 50 mM Tris-HCl, 10 mM reduced Glutathione, pH =8.0 in the elution buffer.

Handling Advice: Aliquot to avoid repeated freezing and thawing.

Storage: -80 °C

Storage Comment: Best use within three months from the date of receipt of this protein.

Images

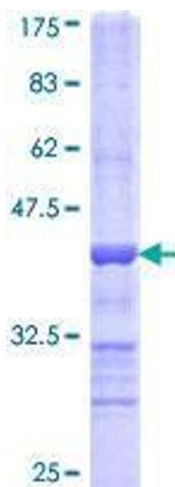


Image 1.