

Datasheet for ABIN1319267

SCML4 Protein (AA 1-305) (GST tag)[Go to Product page](#)**1** Image

Overview

Quantity:	10 µg
Target:	SCML4
Protein Characteristics:	AA 1-305
Origin:	Human
Source:	Wheat germ
Protein Type:	Recombinant
Purification tag / Conjugate:	This SCML4 protein is labelled with GST tag.
Application:	ELISA, Western Blotting (WB), Affinity Purification (AP), Antibody Array (AA)

Product Details

Purpose:	SCML4 (Human) Recombinant Protein (P01)
Sequence:	MPCQRTAWIG CDRQRTPPFH WREIKSRVLM TPLALSPPRS TPEPDLSSIP QDAATVPSLA APQALTVCLY INKQANAGPY LERKKVQLP EHFGERPSA VLQQAVQACI DCAHQKLVF SLVKQGYGGE MVSVSASFDG KQHLSLPVV NSIGYVLRFL AKLCRSLLCD DLFHQPFPR GCSASEKVQE KEEGRMESVK TVTTEEYLVN PVGMNRYSDV TSASTFNHRG SLHPSSSLYC KRQNSGDSHL GGGPAATAGG PRTSPMSSGG PSAPGLRPPA SSPKRNTTSL EGNRCGNVMH ASASH
Characteristics:	Human SCML4 full-length ORF (NP_932347.1, 1 a.a. - 305 a.a.) recombinant protein with GST-tag at N-terminal.
Purification:	in vitro wheat germ expression system

Target Details

Target:	SCML4
Alternative Name:	SCML4 (SCML4 Products)
Background:	Full Gene Name: sex comb on midleg-like 4 (Drosophila) Synonyms: FLJ36252,dJ47M23.1
Gene ID:	256380
NCBI Accession:	NM_198081

Application Details

Application Notes:	Optimal working dilution should be determined by the investigator.
Comment:	Preparation method: in vitro, wheat germ expression system Product Quality tested by: 12.5% SDS-PAGE Stained with Coomassie Blue.
Restrictions:	For Research Use only

Handling

Buffer:	50 mM Tris-HCl, 10 mM reduced Glutathione, pH =8.0 in the elution buffer.
Handling Advice:	Aliquot to avoid repeated freezing and thawing.
Storage:	-80 °C
Storage Comment:	Best use within three months from the date of receipt of this protein.

Images

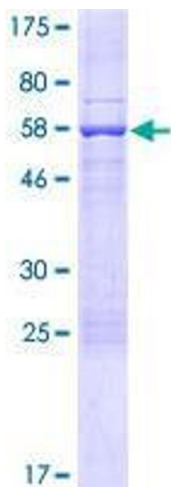


Image 1.